



[www.monoequip.com](http://www.monoequip.com)



# **Bx OVEN**

## **ECOTOUCH CONTROL**

### **SPARES MANUAL**

#### **ALL MODELS**

When ordering spares please quote the **machine serial number** which can be found on the silver information plate of the machine and on the front cover of your manual.

**MONO EQUIPMENT**  
Queensway  
Swansea West Industrial Estate  
Swansea. SA5 4EB UK

Tel. +44(0)1792 561234  
email: [spares@monoequip.com](mailto:spares@monoequip.com)  
Spares Tel. +44(0)1792 564039  
Fax. 01792 561016

## **SAFETY SYMBOLS**

The following safety symbols are used throughout available product documentation and the operating manual (available at [www.monoequip.com](http://www.monoequip.com)).

Pay special attention to information marked with the following symbols.



### **WARNING**

Indicates a hazardous situation which, if not avoided, will result in death or serious injury.



### **WARNING**

Indicates a hazardous situation which, if not avoided, will result in electric shock.



### **CAUTION**

Indicates a hazardous situation which, if not avoided, will result in minor or moderate injury.

## **ELECTRICAL SAFETY AND ADVICE REGARDING SUPPLEMENTARY ELECTRICAL PROTECTION:**

Commercial bakeries, kitchens and foodservice areas are environments where electrical appliances may be located close to liquids or operate in and around damp conditions or where restricted movement for installation and service is evident.

The installation and periodic inspection of the appliance should only be undertaken by a qualified, skilled and competent electrician, and connected to the correct power supply suitable for the load as stipulated by the appliance data label.

The electrical installation and connections should meet the necessary requirements of the local electrical wiring regulations and any electrical safety guidelines.

### **No work should be undertaken without disconnecting the power.**

#### **We Recommend:**

- Supplementary electrical protection with the use of a residual current device (RCD)
- Fixed wiring appliances incorporate a locally situated switch disconnecter to connect to, which is easily accessible for switching off and safe isolation purposes. The switch disconnecter must meet the specification requirements of IEC 60947.



The supply to this machine must be protected by a **30mA RCD**

When ordering spares please quote the **machine serial number** which can be found on the silver information plate of the machine.

**MACHINE SERIAL NUMBER**



**PART 1**

PAGE 4

**FG150 10 TRAY OVEN SPARES SECTION**

**PART 2**

PAGE 13

**FG159 4/5 TRAY 18" X 30" OVEN SPARES SECTION**

**PART 3**

PAGE 21

**FG158 4/5 TRAY 60cm X 40cm OVEN SPARES SECTION**

**PART 4**

PAGE 29

**FG153 4/5 TRAY 40cm X 60cm OVEN SPARES SECTION**

**PART 5**

PAGE 37

**CONDENSER INFORMATION (all versions)**

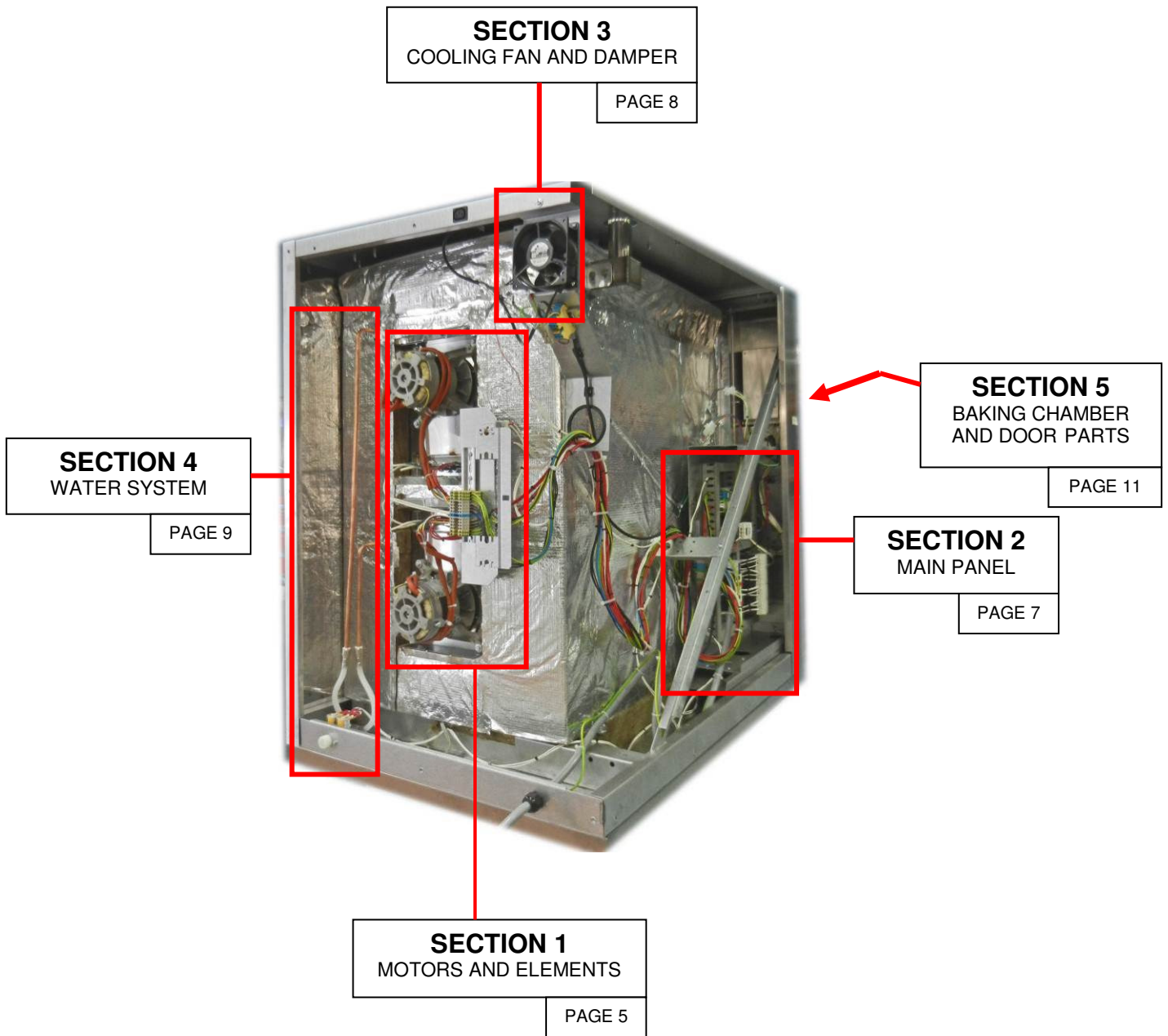
[email:spares@monoequip.com](mailto:spares@monoequip.com)

**Spares +44(0)1792 564039**

# **PART 1**

# **10 TRAY OVEN SPARES SECTION**

FG150



**REAR VIEW WITH OUTER SHEETING REMOVED**

**PART 1 / SECTION 1 – 10 TRAY - MOTORS AND ELEMENTS**

FG150

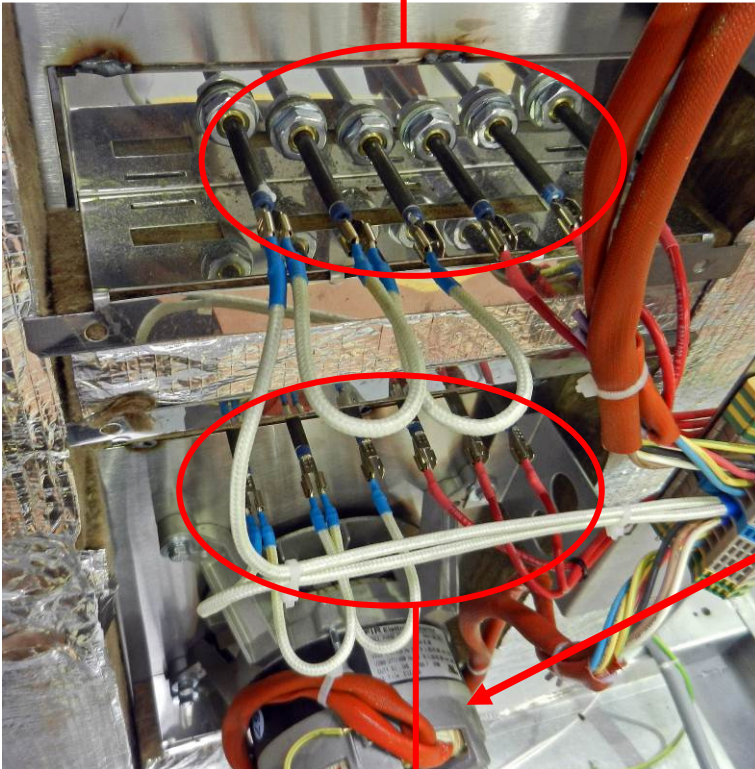
8Kw ovens

**HEATING ELEMENT** – B847-04-068 = 240volts  
B847-04-073 = 220volts

PART 30

7Kw ovens

**HEATING ELEMENT** – B847-04-067 = 240volts  
B847-04-074 = 220volts



PART 18

PART 19

TOP NOT SHOWN

**FAN MOTORS** - B720-74-001

8Kw ovens

**HEATING ELEMENT** – B847-04-068 = 240volts  
B847-04-073 = 220volts

PART 31

7Kw ovens

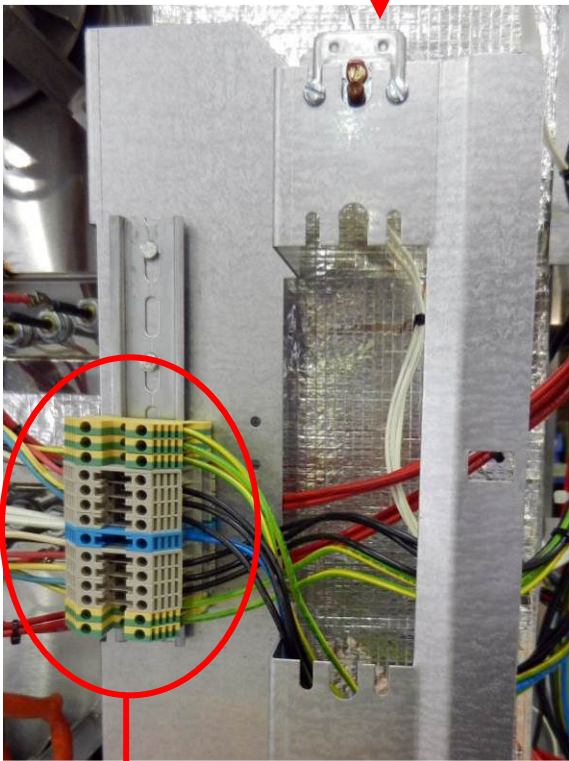
**HEATING ELEMENT** – B847-04-067 = 240volts  
B847-04-074 = 220volts

PART NUMBERS REFER TO DRAWING M1500E25-75100 IN ELECTRICAL MANUAL

FG150

**PART 21**

**OVERHEAT THERMOSTAT – B888-30-014**



**TB3**  
MOTOR AND ELEMENT CONNECTIONS

PART NUMBERS REFER TO DRAWING M1500E25-75100 IN ELECTRICAL MANUAL

**PART 1 / SECTION 2 – 10 TRAY - MAIN PANEL**

FG150

**PT-4A FAN MOTOR OVERLOAD**  
B801-03-020  
**PT4B FAN MOTOR OVERLOAD AUX. CONTACTOR**  
B801-14-012

---

**PT-5A FAN MOTOR OVERLOAD**  
B801-03-020  
**PT5B FAN MOTOR OVERLOAD AUX. CONTACTOR**  
B801-14-012

PART 1

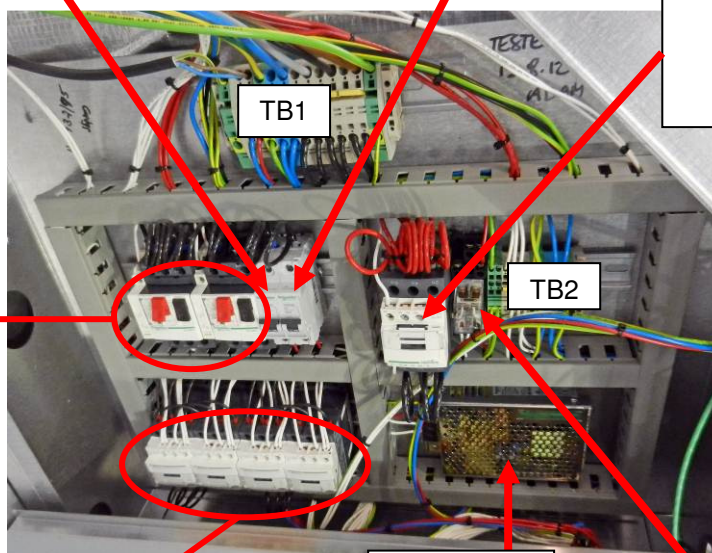
**INTERIOR LIGHTING MCB**  
B872-22-063

PART 2

**CONTROL CIRCUIT MCB**  
B872-22-062

PART 15

**HEATING ELEMENT CONTACTOR**  
B801-08-020



PART 14

**24v DC POWER SUPPLY UNIT**  
B801-93-005

**FAN MOTOR CONTACTORS**

B801-08-031  
PT-10A (TOP FORWARD)  
PT-10B (TOP REVERSE)  
PT-11A (BTM FORWARD)  
PT-11B (BTM REVERSE)

**INTERLOCK UNIT X2**  
B801-18-005

**PT-8A INTERIOR LIGHT RELAY**

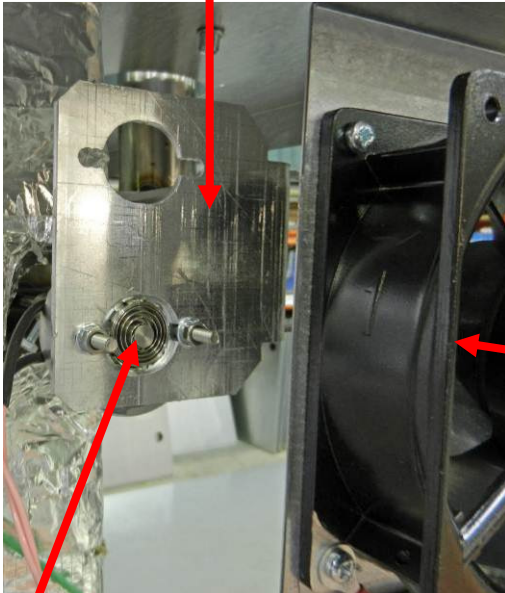
B723-37-004  
**PT8B INTERIOR LIGHT RELAY BASE**  
B723-36-001

PART NUMBERS REFER TO DRAWING M1500E25-75100 IN ELECTRICAL MANUAL

**PART 1 / SECTION 3 – 10 TRAY - COOLING FAN AND DAMPER**

FG150

**DAMPER BRACKET 150-02-01000**



**PART 34**

**REAR FAN UNIT  
B869-75-018**



**PART 37**

**AUX. POWER OUTLET FUSE  
B842-85-039**



**PART 35**

**REAR FAN UNIT FUSE  
B842-85-025**

**PART 17**

**DAMPER SOLENOID L/H OVEN B749-83-003  
DAMPER SOLENOID R/H OVEN B749-83-004**



**COUPLING  
158-02-00600**



**PART NUMBERS REFER TO DRAWING M1500E25-75100 IN ELECTRICAL MANUAL**

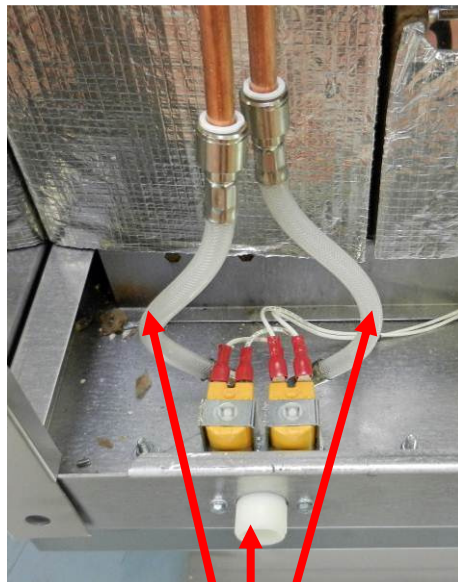


**PART 1 / SECTION 4 – 10 TRAY – WATER/STEAM SYSTEM**

FG150

**DELIVERY PIPE - LONG**  
150-07-00800

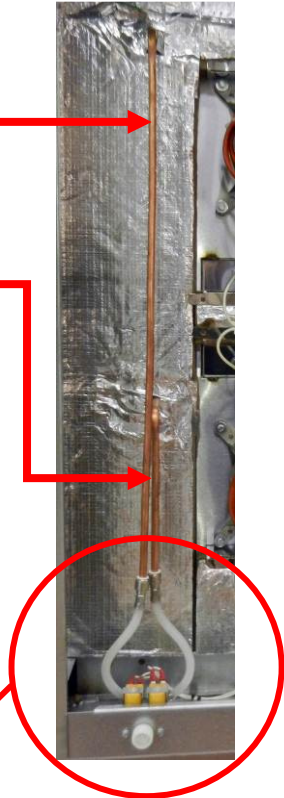
**DELIVERY PIPE - SHORT**  
150-07-00700



PART 20

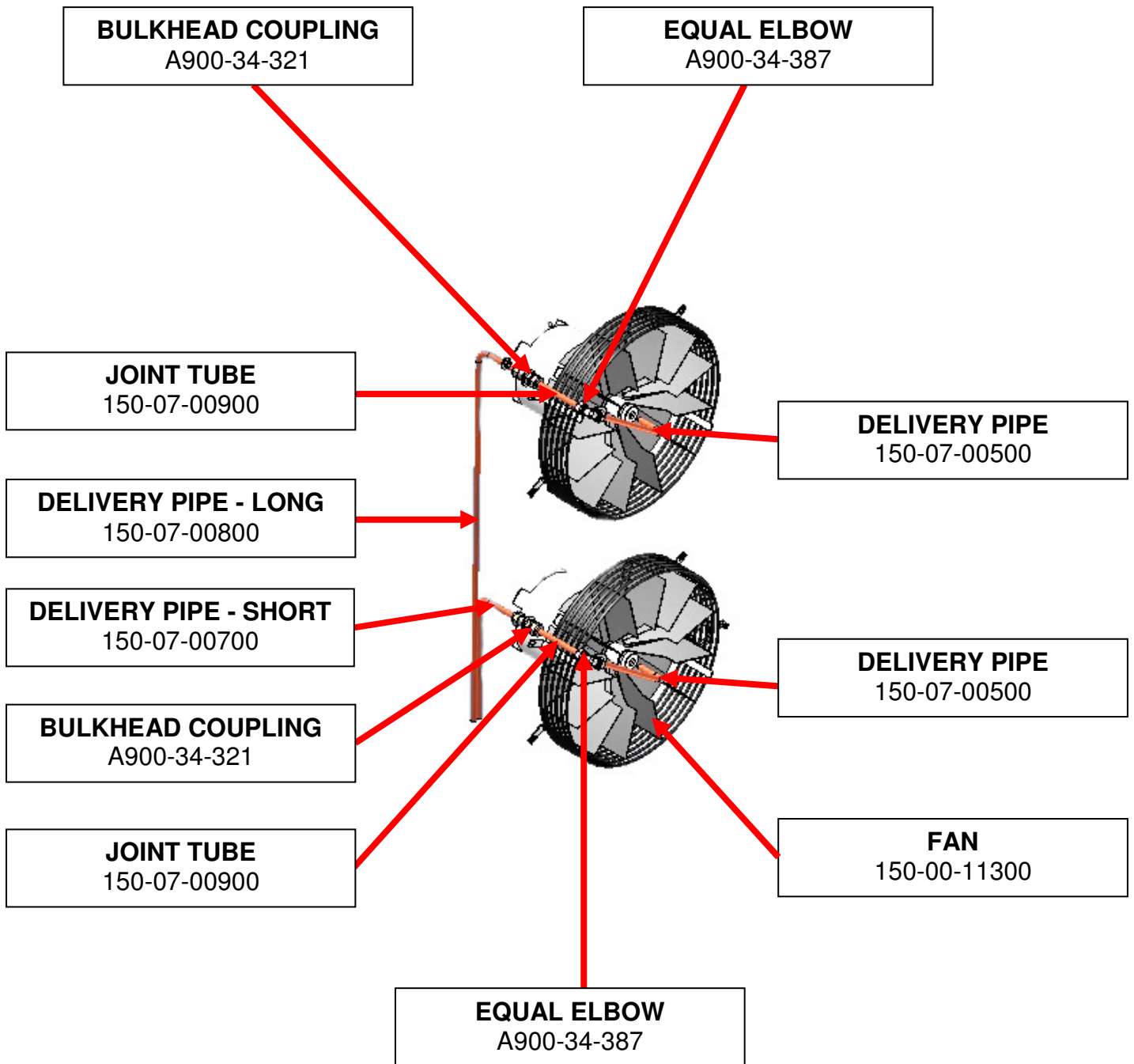
**WATER SOLENOID (INC. HOSES)**  
150-07-00400

**HOSE – BLUE (NOT SHOWN ATTACHED)**  
A900-34-087



**PART 1 / SECTION 4 – 10 TRAY – WATER/STEAM SYSTEM**

FG150

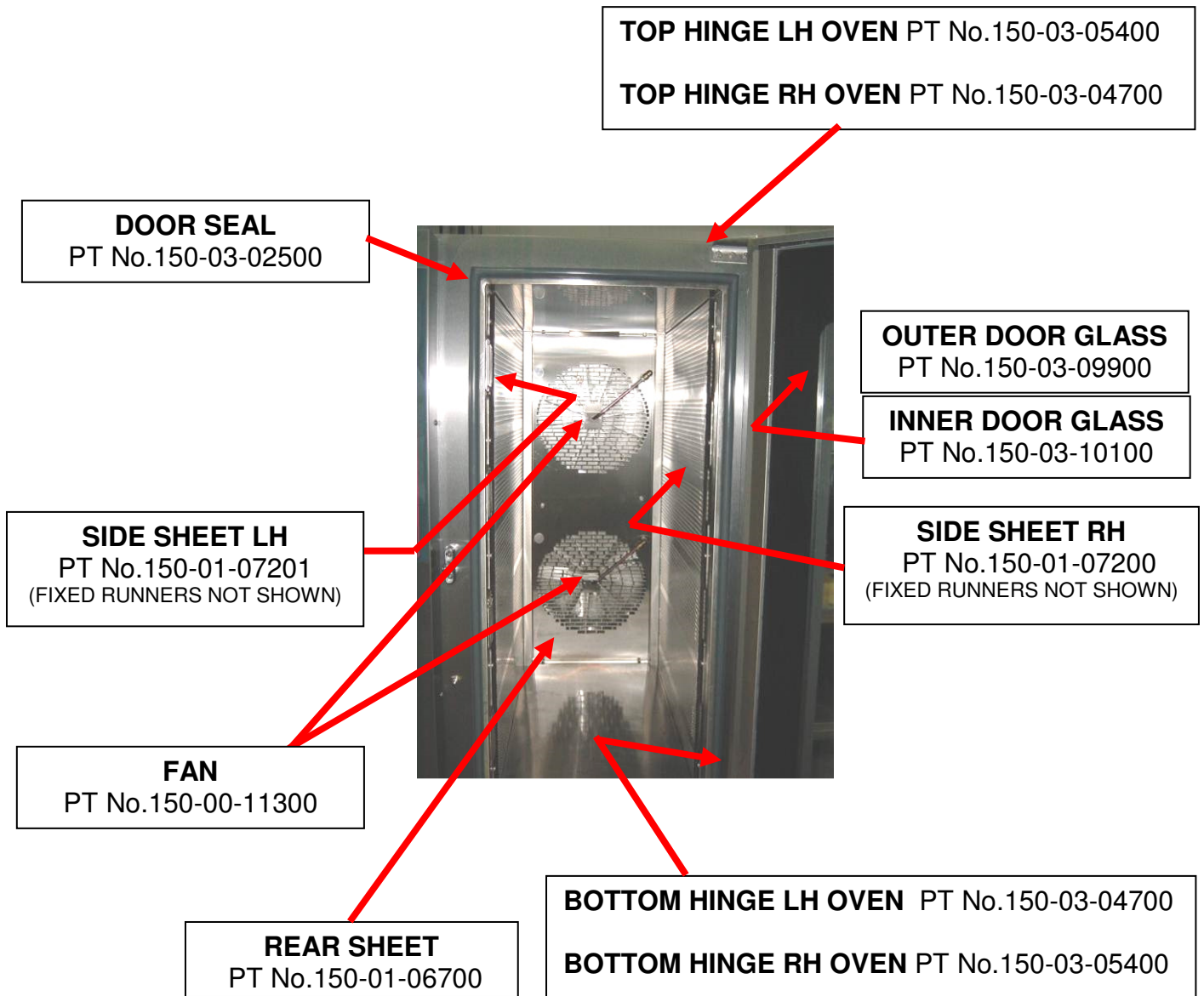


**COMPLETE STEAM ASSY KIT = PT No. 150-07-00003**

INCLUDES 150-01-07700 PIPE GUIDE BRKT X 2  
AND 150-07-00400 DOUBLE SOLENOID INLET VALVE.

**PART 1 / SECTION 5 – 10 TRAY - BAKING CHAMBER AND DOOR PARTS**

FG150



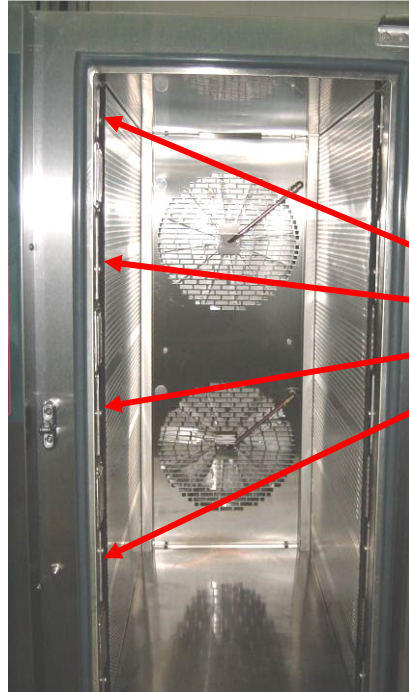
**DOOR SWITCH**  
PT No.B842-07-037



**HANDLE/ CATCH ASSEMBLY**  
PT No.A900-27-171

COMPLETE DOOR ASSEMBLY = PT No 150-03-09500 LH AND RH (STATE WHICH REQ'D)

FG150



**LIGHT ASSEMBLY  
PT No.B721-67-011**

**INDIVIDUAL LIGHT ASSEMBLY PARTS AVAILABLE AS BELOW**

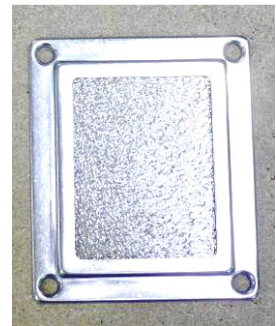


REPLACEMENT BULB = B857-94-007



**GASKET**

Pt. No.B721-67-008



**GLASS AND FRAME**

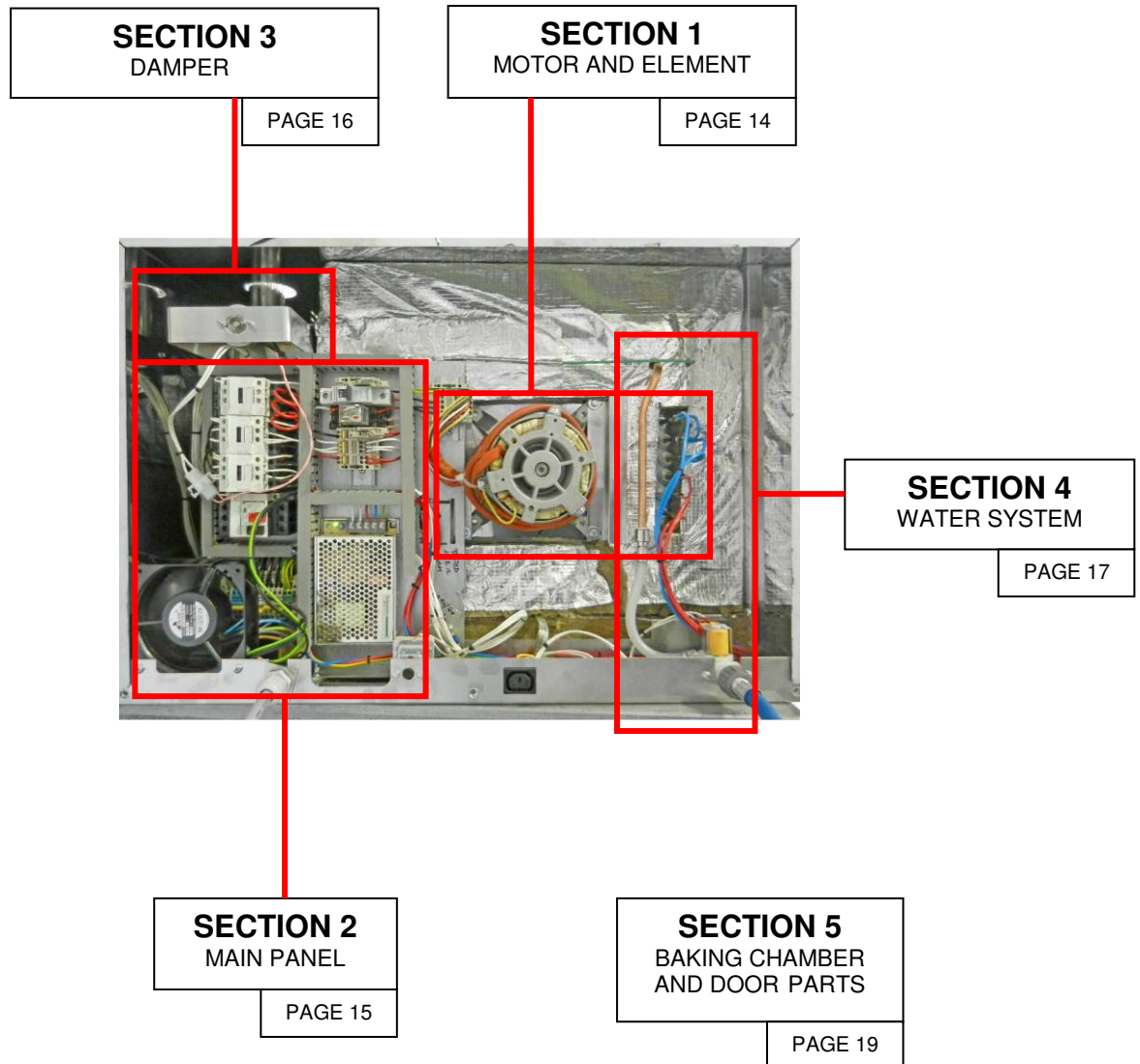
Pt. No.B721-67-010

Pt. No.B721-67-009

# **PART 2**

# **4/5 TRAY 18 X 30 OVEN SPARES SECTION**

FG159

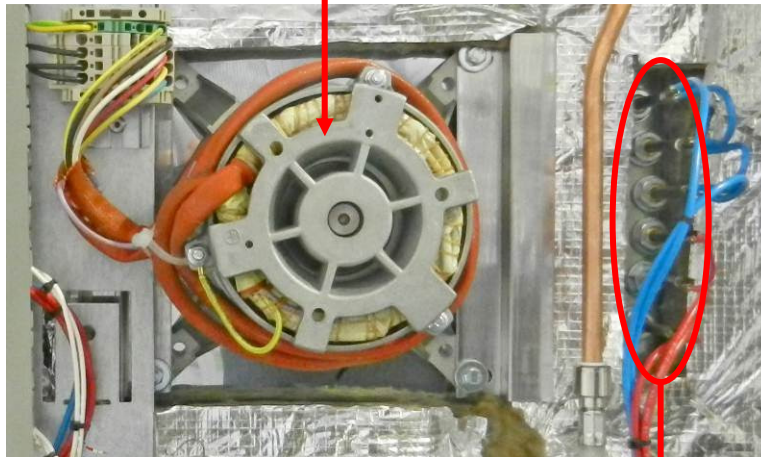


PART NUMBERS REFER TO DRAWING M159E25-75000 IN ELECTRICAL MANUAL

FG159

PART 10

**FAN MOTOR UNIT – B720-74-001**



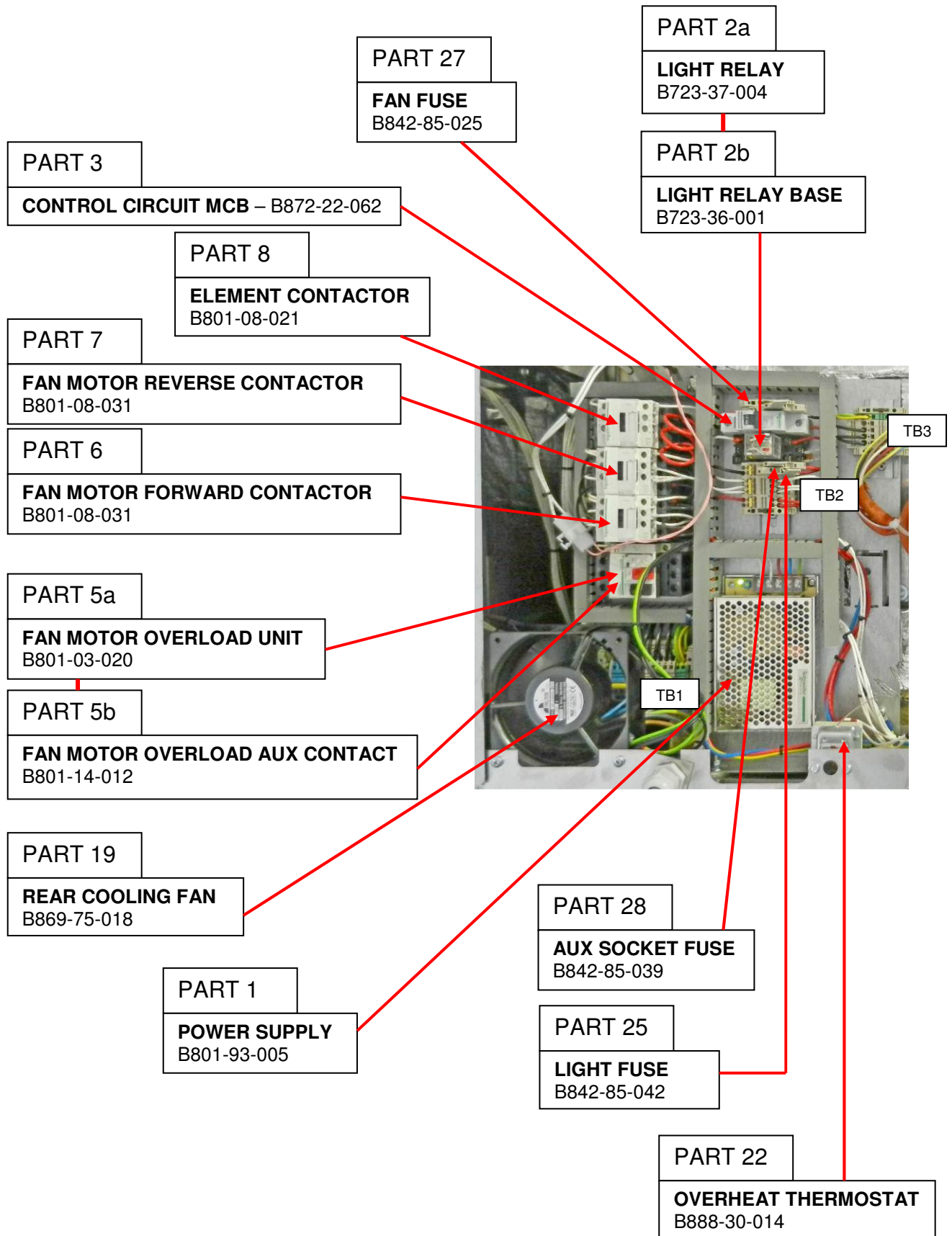
PART 11

**HEATING ELEMENT – B847-04-068 = 240volts  
B847-04-073 = 220volts**

PART NUMBERS REFER TO DRAWING M159E25-75000 IN ELECTRICAL MANUAL

**PART 2 / SECTION 2 – 4/5 TRAY 18 X 30 – MAIN PANEL**

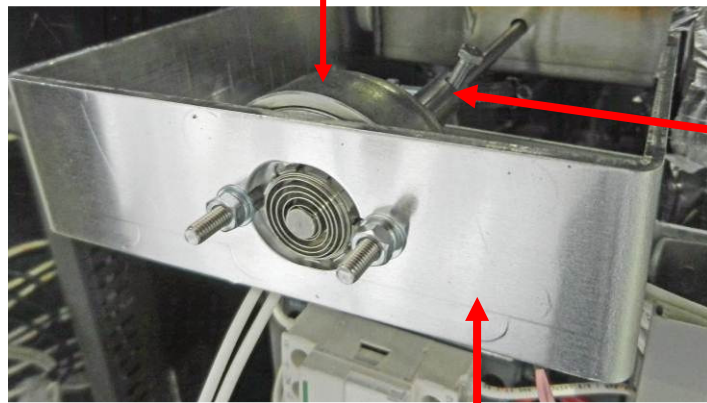
FG159



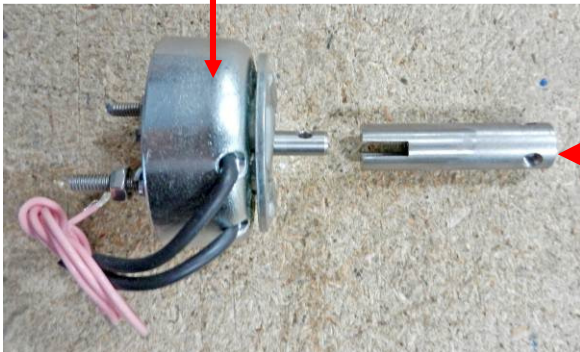
PART NUMBERS REFER TO DRAWING M159E25-75000 IN ELECTRICAL MANUAL

**PART 9**

**DAMPER SOLENOID L/H OVEN B749-83-003**  
**DAMPER SOLENOID R/H OVEN B749-83-004**



**DAMPER SOLENOID BRKT**  
**158-02-00300**



**COUPLING**  
**158-02-00600**

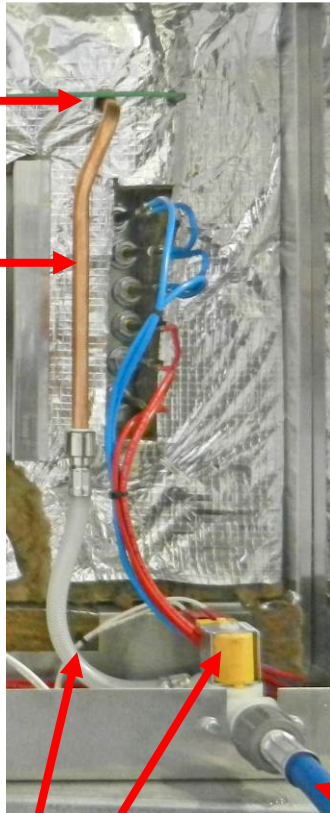
**PART NUMBERS REFER TO DRAWING M159E25-75000 IN ELECTRICAL MANUAL**



FG159

**BULKHEAD COUPLING**  
A900-34-321  
(UNDER INSULATION)

**COPPER PIPE**  
A900-34-253  
(10mm OD X 20 swg)



**HOSE – BLUE**  
A900-34-087

PART 12

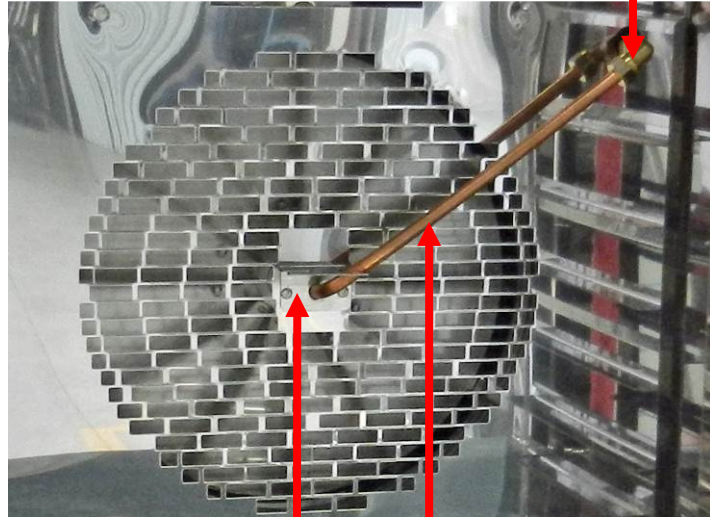
**WATER INLET ASSY (INC. HOSE)**  
158-17-00400

PART NUMBERS REFER TO DRAWING M159E25-75000 IN ELECTRICAL MANUAL

**PART 2 / SECTION 4 – 4/5 TRAY 18 X 30 – WATER/STEAM SYSTEM**

FG159

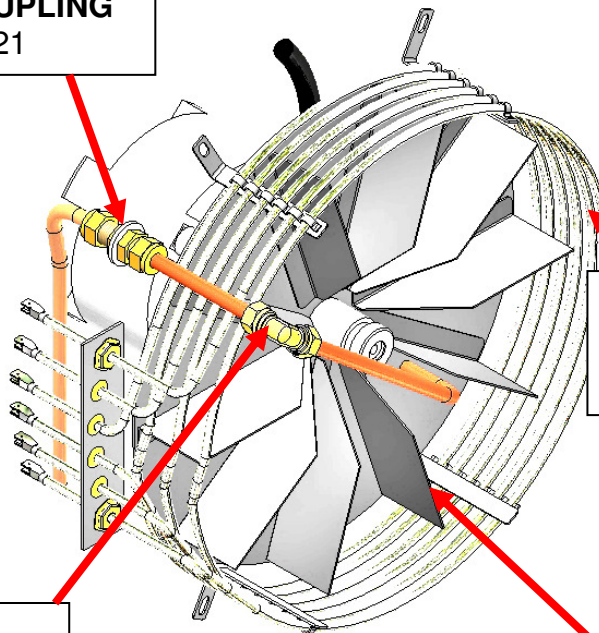
**EQUAL ELBOW**  
A900-34-387



**PIPE GUIDE BRACKET**  
150-01-07700

**INDIVIDUAL PART NUMBERS ARE NOT AVAILABLE FOR PIPES. ALL PIPES MADE FROM A900-34-253 COPPER PIPE 10mm O/D X 20swg WALL**

**BULKHEAD COUPLING**  
A900-34-321



**HEATING ELEMENT**  
B847-04-068 = 240volts  
B847-04-073 = 220volts

**EQUAL ELBOW**  
A900-34-387

**FAN**  
150-00-11300

**PART 2 / SECTION 5 – 4/5 TRAY 18 X 30 BAKING CHAMBER AND DOOR PARTS**

FG159

**TOP HINGE LH OVEN** PT No.158-03-10501

**TOP HINGE RH OVEN** PT No.158-03-10500

**DOOR SEAL**

PT No.159-03-01500

**REAR SHEET**

PT No.159-01-10900

**OUTER DOOR GLASS**

PT No.159-03-04200

**FAN**

PT No.150-00-11300

**INNER DOOR INCLUDING GLASS**

PT No.159-03-10200

**LH FIXED RUNNERS 4 TRAY**

PT No.159-01-05000

**LH FIXED RUNNERS 5 TRAY**

PT No.159-01-05200

**RH FIXED RUNNERS 4 TRAY**

PT No.159-01-05001

**RH FIXED RUNNERS 5 TRAY**

PT No.159-01-05201

**TOP PIN**

PT No.154-01-00800

**BOTTOM PIN**

PT No.154-01-00700

**BOTTOM HINGE LH OVEN** PT No.158-03-10500

**BOTTOM HINGE RH OVEN** PT No.158-03-10501



**DOOR SWITCH**

PT No.B842-07-037



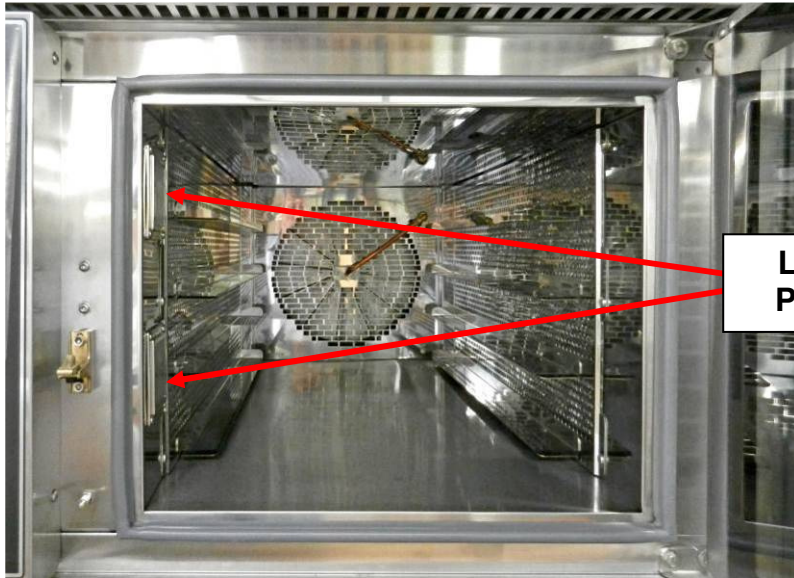
**HANDLE/ CATCH ASSEMBLY**

PT No.A900-27-118



COMPLETE DOOR ASSEMBLY = PT No 159-03-04000 = LH HINGE DOOR  
PT No 159-03-04001 = RH HINGE DOOR

FG159



**LIGHT ASSEMBLY  
PT No.B721-67-011**

**INDIVIDUAL LIGHT ASSEMBLY PARTS AVAILABLE AS BELOW**

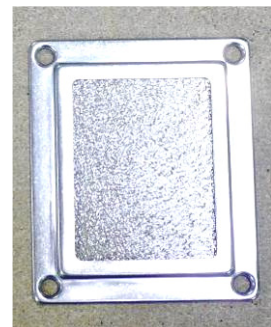


REPLACEMENT BULB = B857-94-007



**GASKET**

Pt No.B721-67-008



**GLASS AND FRAME**

Pt No.B721-67-010

Pt No.B721-67-009

**DO NOT TOUCH BULBS WITH BARE HANDS.**

USE A CLOTH OR GLOVES TO STOP ANY MARKS THAT  
WILL CAUSE HOT SPOTS AND PREMATURE BULB FAILURE.

# **PART 3**

# **4/5 TRAY 60 X 40 OVEN SPARES SECTION**

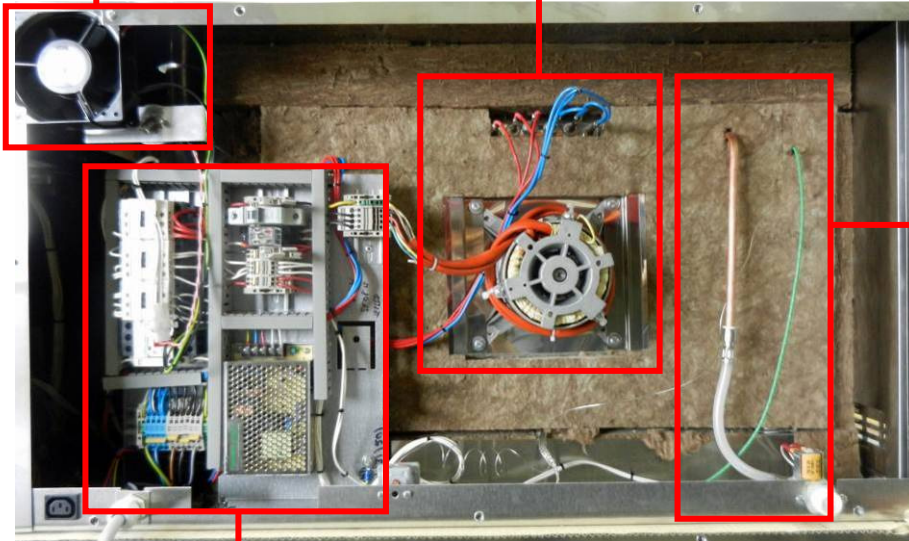
FG158

## **SECTION 3** DAMPER AND FAN

PAGE 24

## **SECTION 1** MOTOR AND ELEMENT

PAGE 22



## **SECTION 4** WATER SYSTEM

PAGE 25

## **SECTION 2** MAIN PANEL

PAGE 23

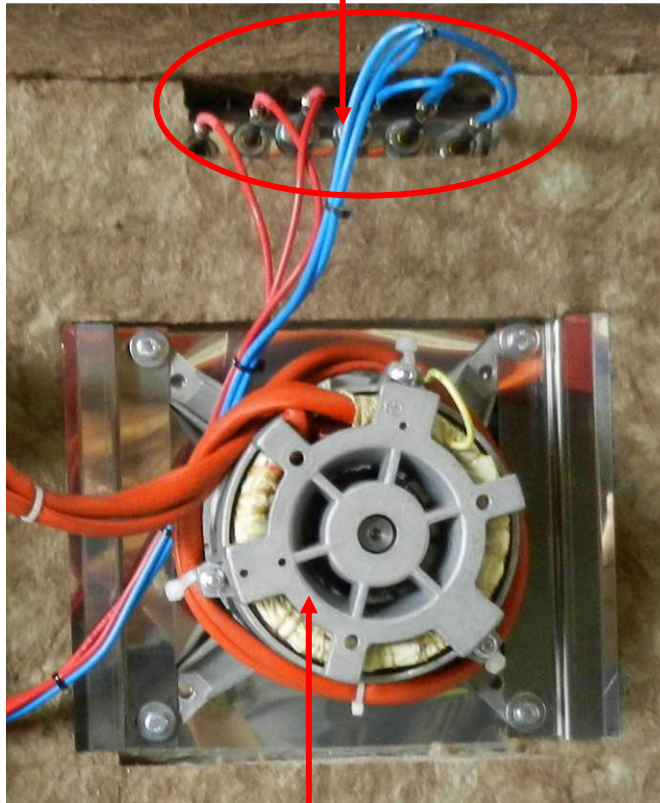
## **SECTION 5** BAKING CHAMBER AND DOOR PARTS

PAGE 27

FG158

**PART 11**

**HEATING ELEMENT** – B847-04-067 = 240volts  
B847-04-074 = 220volts



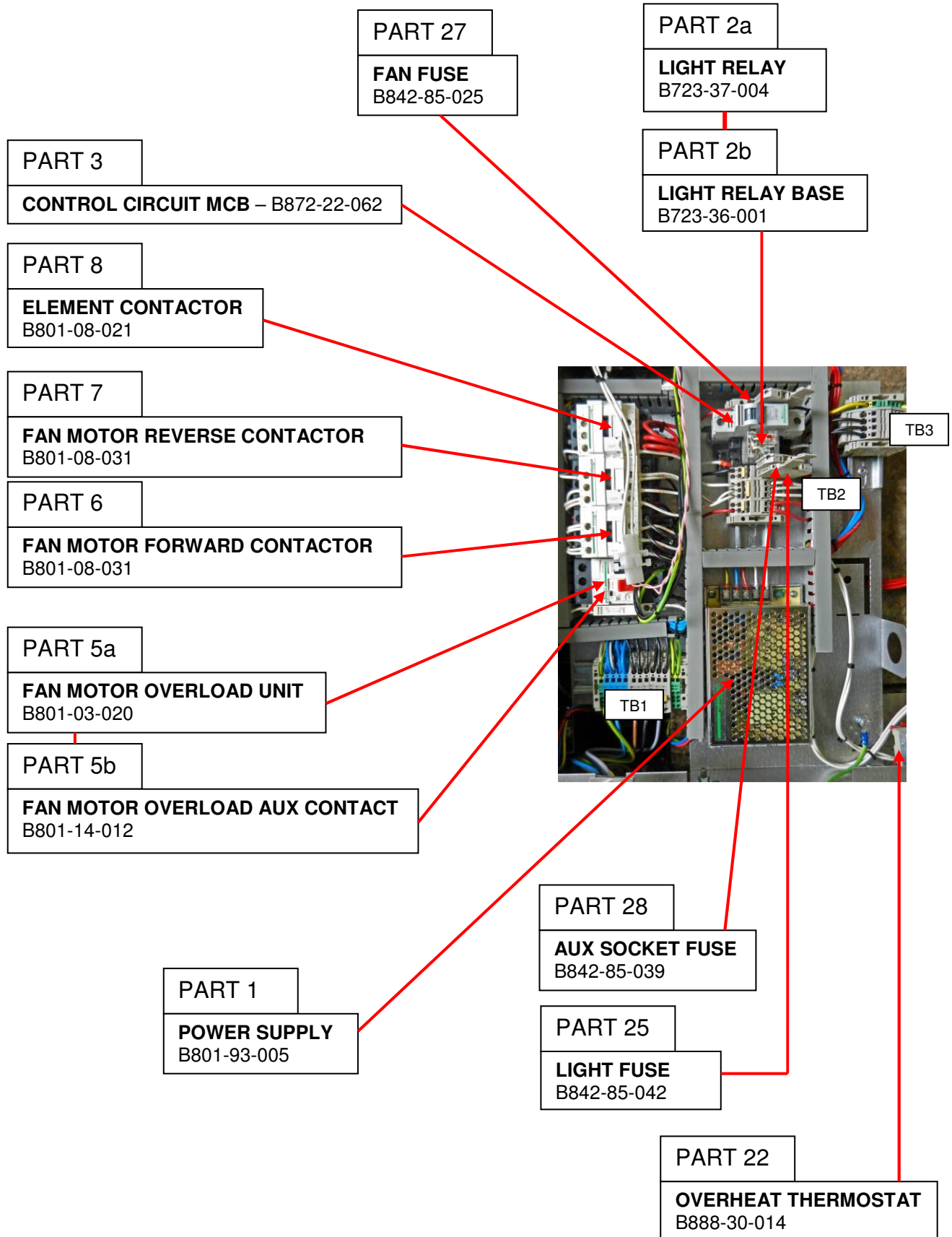
**PART 10**

**FAN MOTOR UNIT** – B720-74-001

PART NUMBERS REFER TO DRAWING M158E25-75200 IN ELECTRICAL MANUAL

**PART 3 / SECTION 2 – 4/5 TRAY 60 X 40 – MAIN PANEL**

FG158

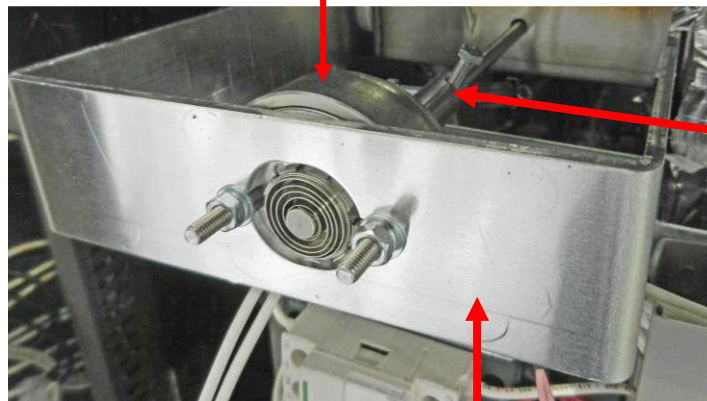


PART NUMBERS REFER TO DRAWING M158E25-75200 IN ELECTRICAL MANUAL

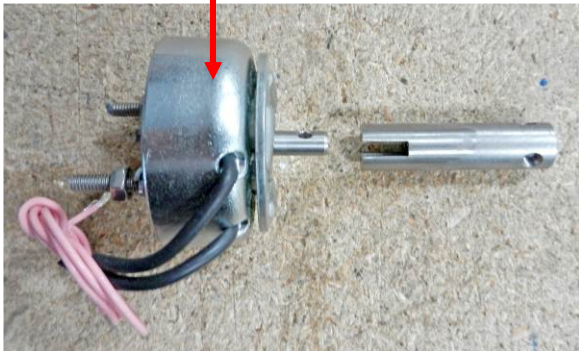
FG158

**PART 9**

**DAMPER SOLENOID L/H OVEN B749-83-003**  
**DAMPER SOLENOID R/H OVEN B749-83-004**



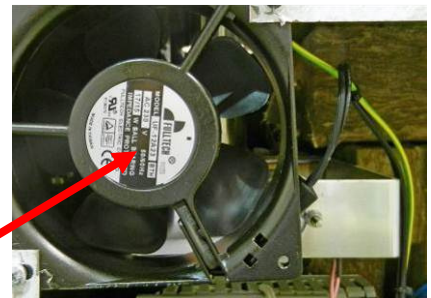
**DAMPER SOLENOID BRKT**  
**158-02-00300**



**COUPLING**  
**158-02-00600**

**PART 19**

**REAR COOLING FAN**  
**B869-75-018**



**PART NUMBERS REFER TO DRAWING M159E25-75200 IN ELECTRICAL MANUAL**



FG158

**BULKHEAD COUPLING**  
A900-34-321  
(UNDER INSULATION)

**COPPER PIPE**  
A900-34-253  
(10mm OD X 20 swg)



PART 12

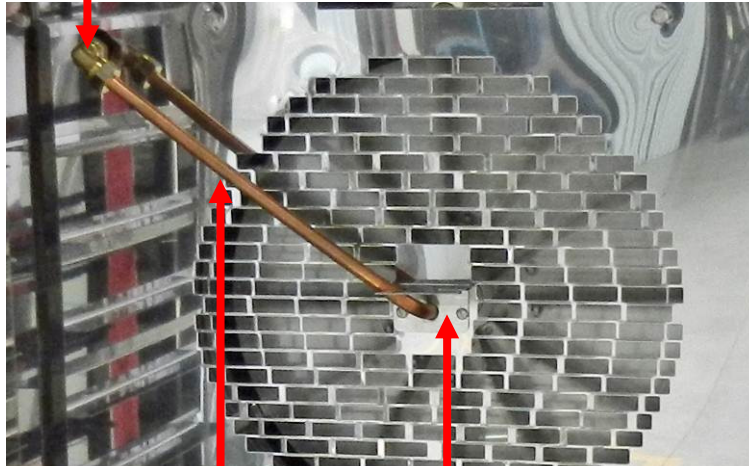
**WATER INLET ASSY (INC. HOSE)**  
158-17-00400

**HOSE – BLUE (NOT SHOWN)**  
A900-34-087

PART NUMBERS REFER TO DRAWING M159E25-75200 IN ELECTRICAL MANUAL

FG158

**EQUAL ELBOW**  
A900-34-387

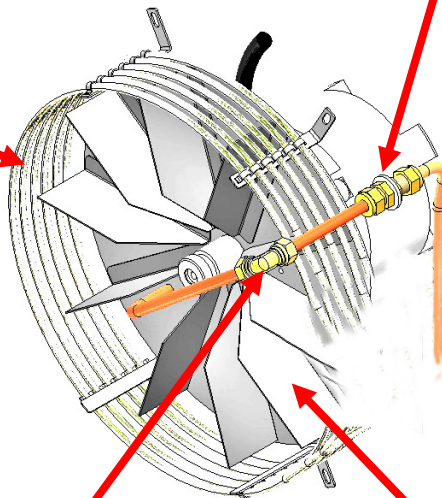


**INDIVIDUAL PART NUMBERS ARE NOT AVAILABLE FOR PIPES. ALL PIPES MADE FROM A900-34-253 COPPER PIPE 10mm O/D X 20swg WALL**

**PIPE GUIDE BRACKET**  
150-01-07700

**HEATING ELEMENT**  
B847-04-067 = 240volts  
B847-04-074 = 220volts

**BULKHEAD COUPLING**  
A900-34-321



**EQUAL ELBOW**  
A900-34-387

**FAN**  
150-00-11200

**PART 3 / SECTION 5 – 4/5 TRAY 60 X 40 BAKING CHAMBER AND DOOR PARTS**

FG158

**TOP HINGE LH OVEN** PT No.158-03-10501

**TOP HINGE RH OVEN** PT No.158-03-10500

**DOOR SEAL**

PT No.158-03-01500

**REAR SHEET**

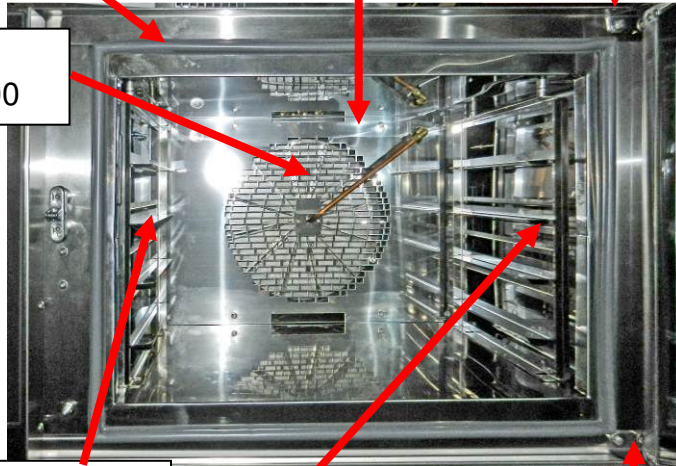
PT No.158-01-11200

**FAN**

PT No.158-00-11200

**OUTER/INNER  
DOOR GLASS**

PT No.158-03-03600



**LH RUNNER RACK 4/5 TRAY**

PT No.158-04-01000

**RH RUNNER RACK 4/5 TRAY**

PT No.158-04-01001

**BOTTOM HINGE LH OVEN** PT No.158-03-10500

**BOTTOM HINGE RH OVEN** PT No.158-03-10501



**DOOR SWITCH**

PT No.B842-07-037



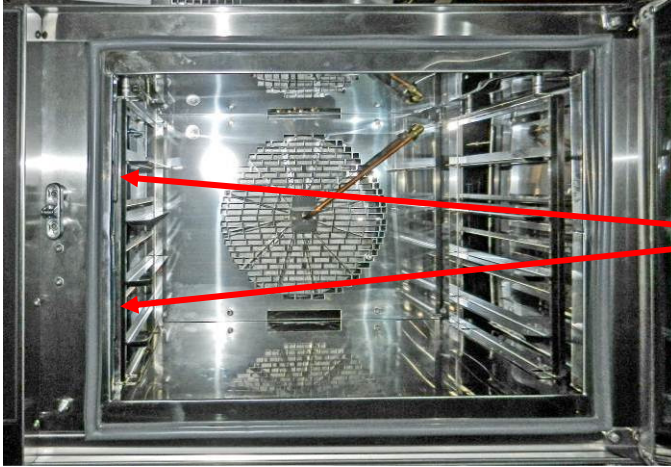
**HANDLE/ CATCH ASSEMBLY**

PT No.A900-27-171



COMPLETE DOOR ASSEMBLY = PT No 158-03-03400 = LH HINGE DOOR  
PT No 158-03-03401 = RH HINGE DOOR

FG158



**LIGHT ASSEMBLY  
PT No.B721-67-011**

**INDIVIDUAL LIGHT ASSEMBLY PARTS AVAILABLE AS BELOW**

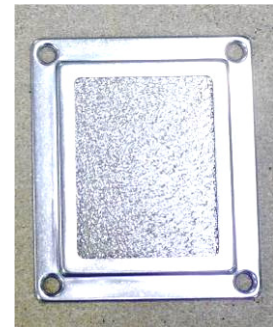


REPLACEMENT BULB = B857-94-007



**GASKET**

Pt No.B721-67-008



**GLASS AND FRAME**

Pt No.B721-67-010

Pt No.B721-67-009

**DO NOT TOUCH BULBS WITH BARE HANDS.**

USE A CLOTH OR GLOVES TO STOP ANY MARKS THAT  
WILL CAUSE HOT SPOTS AND PREMATURE BULB FAILURE.

# **PART 4 4/5 TRAY 40 X 60 OVEN SPARES SECTION**

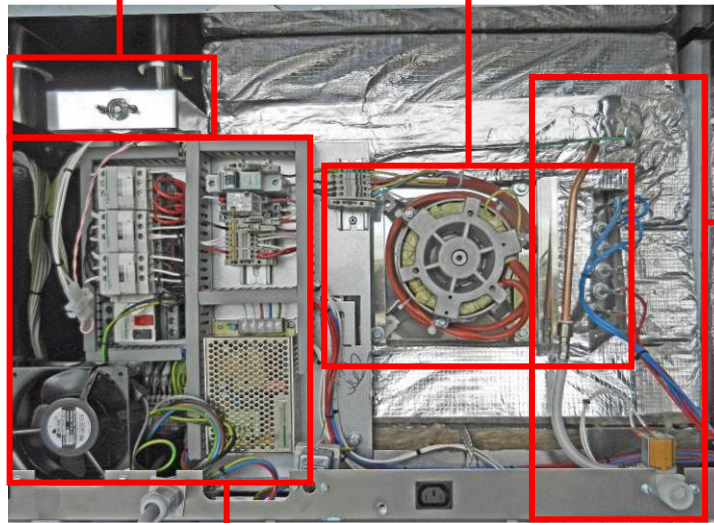
FG153

**SECTION 3**  
DAMPER

PAGE 32

**SECTION 1**  
MOTOR AND ELEMENT

PAGE 30



**SECTION 4**  
WATER SYSTEM

PAGE 33

**SECTION 2**  
MAIN PANEL

PAGE 31

**SECTION 5**  
BAKING CHAMBER  
AND DOOR PARTS

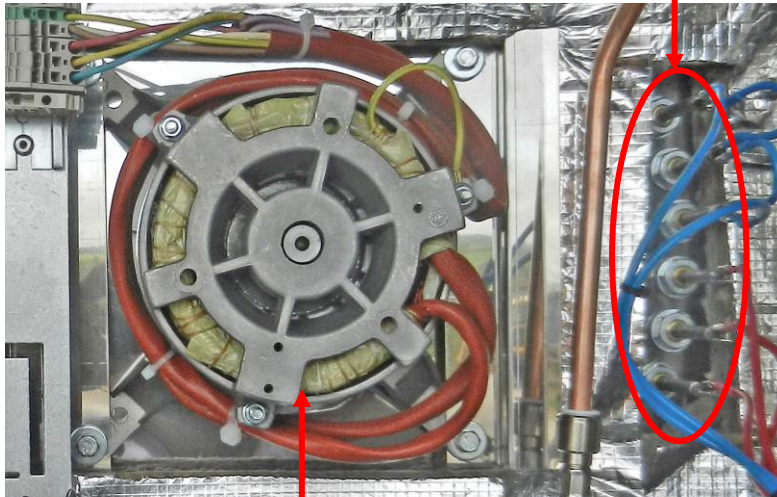
PAGE 35

**PART 4 / SECTION 1 – 4/5 TRAY 40 X 60 – MOTOR AND ELEMENT**

FG153

PART 11

**HEATING ELEMENT** – B847-04-067 = 240volts  
B847-04-074 = 220volts



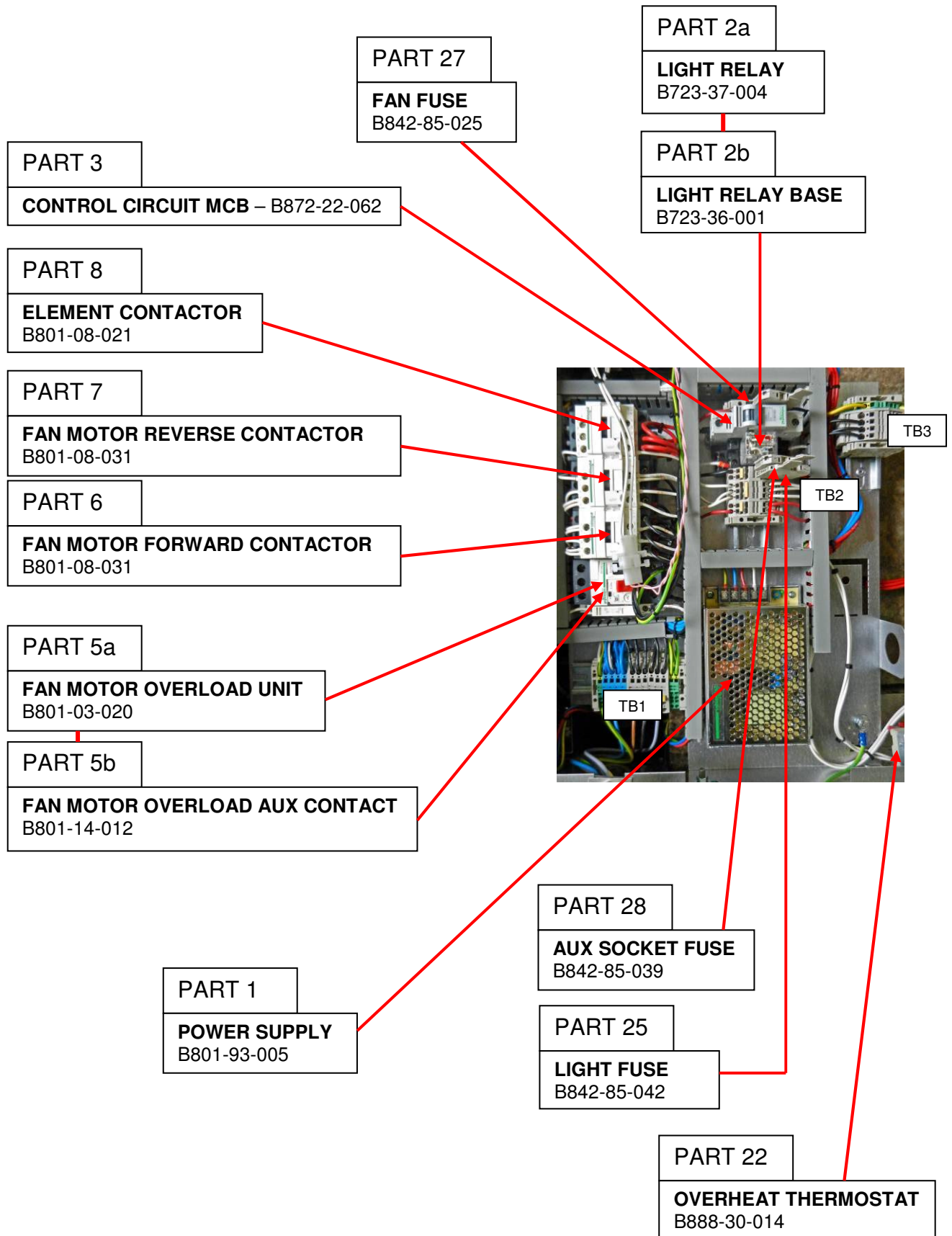
PART 10

**FAN MOTOR UNIT** – B720-74-001

PART NUMBERS REFER TO DRAWING M158E25-75200 IN ELECTRICAL MANUAL

**PART 4 / SECTION 2 – 4/5 TRAY 40 X 60 – MAIN PANEL**

FG153



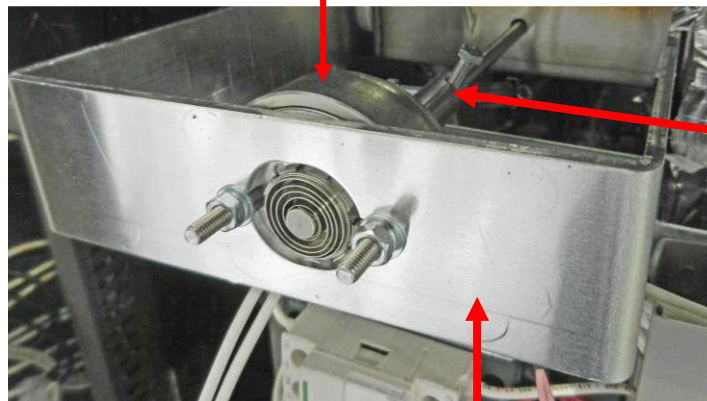
PART NUMBERS REFER TO DRAWING M158E25-75200 IN ELECTRICAL MANUAL

**PART 4 / SECTION 3 – 4/5 TRAY 40 X 60 – DAMPER AND COOLING FAN**

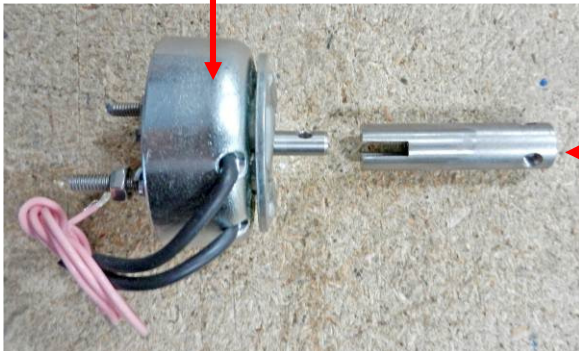
FG153

**PART 9**

**DAMPER SOLENOID L/H OVEN B749-83-003**  
**DAMPER SOLENOID R/H OVEN B749-83-004**



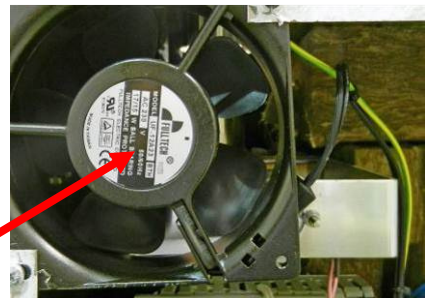
**DAMPER SOLENOID BRKT**  
**158-02-00300**



**COUPLING**  
**158-02-00600**

**PART 19**

**REAR COOLING FAN**  
**B869-75-018**



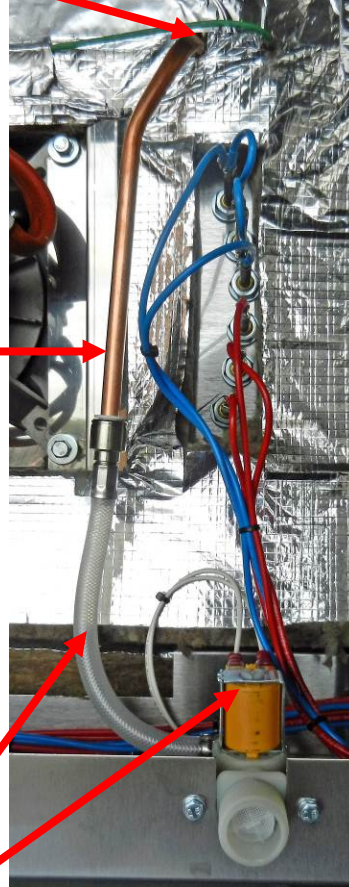
PART NUMBERS REFER TO DRAWING M158E25-75200 IN ELECTRICAL MANUAL



FG153

**BULKHEAD COUPLING**  
A900-34-321  
(UNDER INSULATION)

**COPPER PIPE**  
A900-34-253  
(10mm OD X 20 swg)



PART 12

**WATER INLET ASSY (INC. HOSE)**  
158-17-00400

**HOSE – BLUE (NOT SHOWN)**  
A900-34-087

PART NUMBERS REFER TO DRAWING M158E25-75200 IN ELECTRICAL MANUAL

**PART 4 / SECTION 4 – 4/5 TRAY 40 X 60 – WATER/STEAM SYSTEM**

FG153

**EQUAL ELBOW**  
A900-34-387

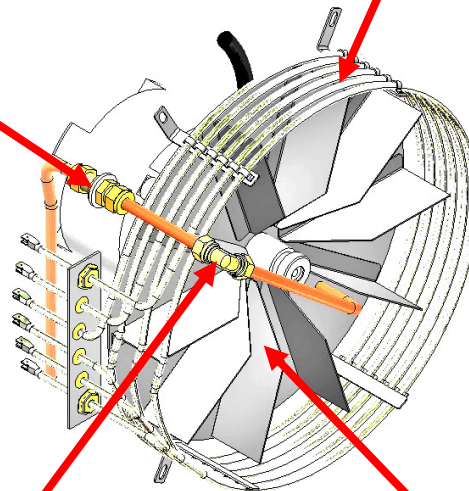


**INDIVIDUAL PART NUMBERS ARE NOT AVAILABLE FOR PIPES. ALL PIPES MADE FROM A900-34-253 COPPER PIPE 10mm O/D X 20swg WALL**

**PIPE GUIDE BRACKET**  
150-01-07700

**HEATING ELEMENT**  
B847-04-067 = 240volts  
B847-04-074 = 220volts

**BULKHEAD COUPLING**  
A900-34-321



**EQUAL ELBOW**  
A900-34-387

**FAN**  
150-00-11200

**PART 4 / SECTION 5 – 4/5 TRAY 40 X 60 BAKING CHAMBER AND DOOR PARTS**

FG153

**TOP HINGE LH OVEN PT No.158-03-10501**

**TOP HINGE RH OVEN PT No.158-03-10500**

**DOOR SEAL**

PT No.153-23-00500

**REAR SHEET**

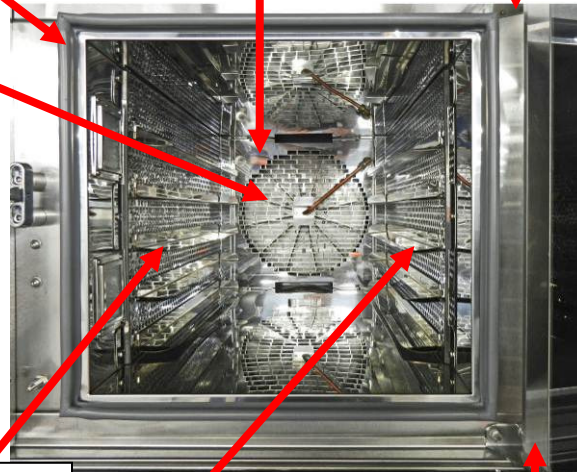
PT No.153-51-00900

**FAN**

PT No.158-00-11200

**OUTER/INNER  
DOOR GLASS**

PT No.153-03-01700



**LH CLIP ON RUNNER**

PT No.149-01-07101

**RH CLIP ON RUNNER**

PT No.149-01-07100

**BOTTOM HINGE LH OVEN PT No.158-03-10500**

**BOTTOM HINGE RH OVEN PT No.158-03-10501**



**DOOR SWITCH**

PT No.B842-07-037



**HANDLE/ CATCH ASSEMBLY**

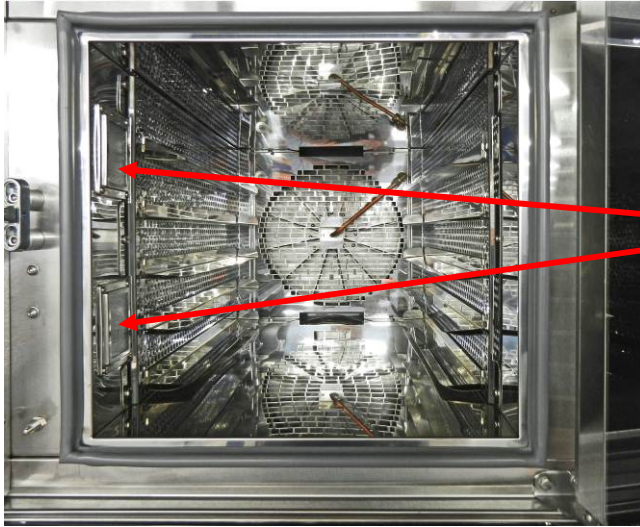
PT No.A900-27-171



COMPLETE DOOR ASSEMBLY = PT No 153-03-01200 = LH HINGE DOOR  
PT No 153-03-01201 = RH HINGE DOOR

**PART 4 / SECTION 5 – 4/5 TRAY 40 X 60 BAKING CHAMBER AND DOOR PARTS**

FG153



**LIGHT ASSEMBLY  
PT No.B721-67-011**

**INDIVIDUAL LIGHT ASSEMBLY PARTS AVAILABLE AS BELOW**

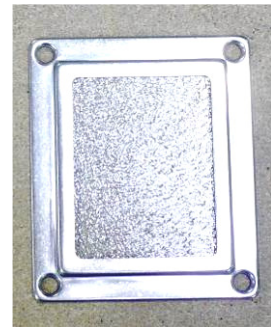


REPLACEMENT BULB = B857-94-007



**GASKET**

Pt No.B721-67-008



**GLASS AND FRAME**

Pt No.B721-67-010

Pt No.B721-67-009

**DO NOT TOUCH BULBS WITH BARE HANDS.**

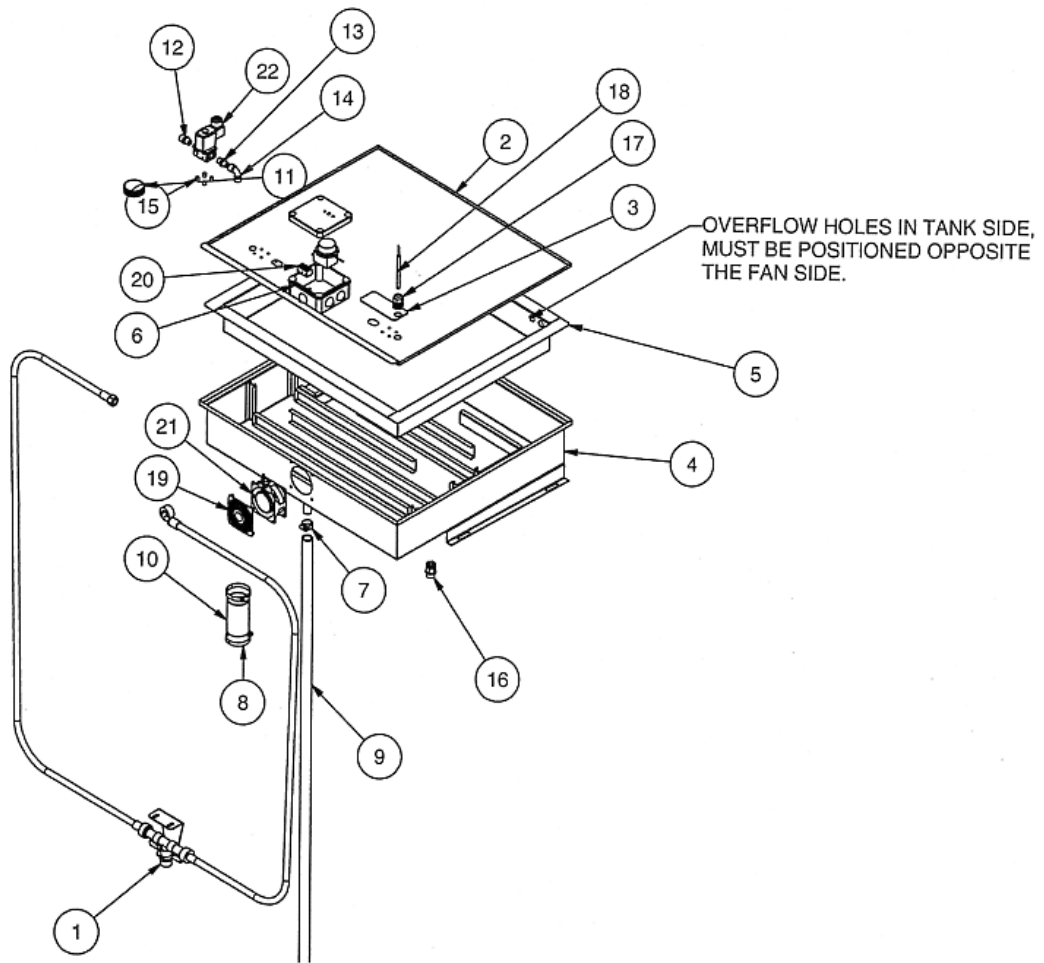
USE A CLOTH OR GLOVES TO STOP ANY MARKS THAT WILL  
CAUSE HOT SPOTS AND PREMATURE BULB FAILURE.

# **PART 5**

# **CONDENSER INFORMATION**

CODES FG150-AC3, FG150-AC5, FG155-X38, FG158-AC1, FG158-AC3, FG158-AC4, FG159-AC1

## **COMMON CONDENSER UNIT MAIN PARTS FG150-AC3**



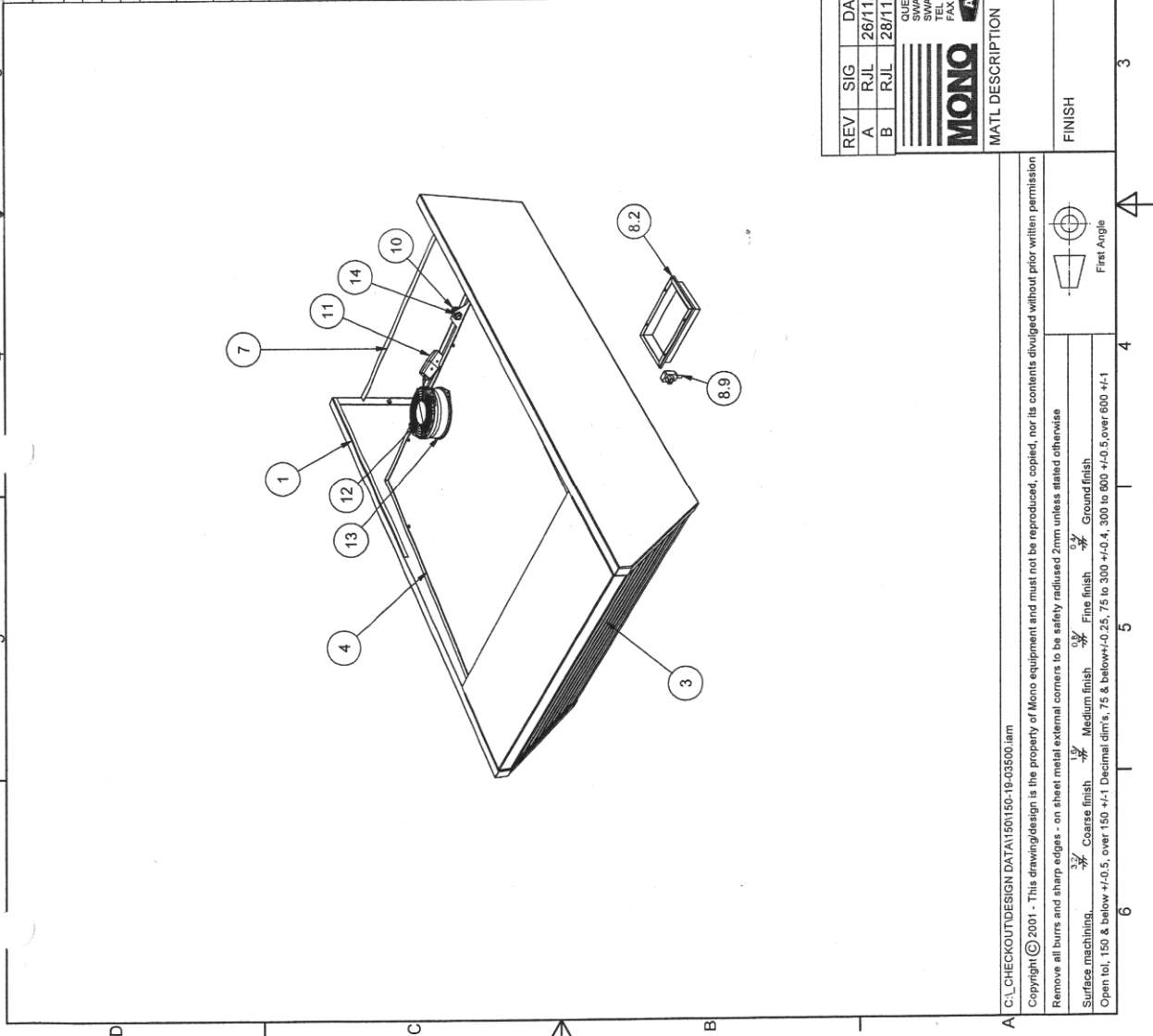
PART NUMBERS ON NEXT PAGE

<b>ITEM</b>	<b>PART No.</b>	<b>DESCRIPTION</b>	<b>QTY</b>
①	150-07-01300	INLET WATER CONTROL UNIT	1
②	150-19-01700	TOP SHEET	1
③	150-19-02300	COVER PLATE	1
④	150-19-02600	BASE TRAY	1
⑤	150-19-02700	WATER TANK	1
⑥	150-25-07100	JUNCTION BOX	1
⑦	A900-01-196	WORM DRIVE CLIP	1
⑧	A900-01-271	WORM DRIVE CLIP	2
⑨	A900-23-004	DRAIN TUBE (2 METRES)	1
⑩	A900-23-027	FLEXIBLE TUBE	1
⑪	A900-27-187	PLUG INSERT	1
⑫	A900-34-191	REDUCER ¼" BSP MALE X 3/8" BSPT MALE	1
⑬	A900-34-244	REDUCER ¼" BSP MALE X ¼" BSPT MALE	1
⑭	A900-34-245	ELBOW	1
⑮	B811-33-001	SPACER	4
⑯	B839-17-003	CABLE GLAND TYPE 251	1
⑰	B842-17-005	CABLE GLAND TYPE 206-6096	1
⑱	B842-30-003	THERMOSTAT	1
⑲	B842-40-002	FAN GUARD	1
⑳	B842-50-005	PORCELAIN CONNECTING BLOCK	1
㉑	B869-75-003	FAN	1
㉒	B867-83-011	SOLENOID VALVE	1

# OTHER VERSIONS THAT MAY BE FITTED

FG150-AC5

ITEM	PART NUMBER	DESCRIPTION	QTY
1	150-19-03600	CANOPY MAIN FAB	1
2	159-14-02100	CONDENSER TANK FAB	1
3	159-14-02800	CANOPY GRILL	1
4	159-14-03600	CONDENSER TOP COVER	1
5	159-14-03700 (A900-23-027)	FLEXIBLE CONNECTING DUCT	1
6	159-14-03701 (A900-23-027)	FLEXIBLE CONNECTION DUCT	1
7	159-14-03800	REAR GUARD	1
8	159-14-04000	EVAPORATOR BOX	1
8.1	159-14-04100	EVAPORATOR BASE	1
8.2	159-14-04200	EVAPORATOR TRAY	1
8.3	159-14-04600	INSULATION BLANKET (A900-32-037)	1
8.4	A900-03-715	SCREW PAN HD SLOT M4x12LG STAIN. ST	4
8.5	B802-04-001	240 V 20 W MICA HEATER PAD	1
8.6	B839-17-004	CABLE GLAND TYPE 250	2
8.7	B842-50-009	CERAMIC CONNECTOR BLOCK (2 WAY)	1
8.8	B886-28-009	LOCKNUT M16	2
8.9	B970-25-002	ANGLED MALE CONNECTOR	1
9	A900-01-271	WORM DRIVE CLIP	2
10	B839-17-004	CABLE GLAND TYPE 250	1
11	B849-64-002	CONNECTOR-IN LINE LCPT03	1
12	B869-40-001	Fan Finger Guard 51019-2-4039	1
13	B869-75-032	FAN-TROPICALIZED (UF-15KM23 BTHF)	1
14	B886-28-009	LOCKNUT M16	1



REV	SIG	DATE	DESCRIPTION	ECN
A	RJL	26/11/2007	DRAIN TUBE AND FIXING TRAY AND CABLE TIES REMOVED	3100
B	RJL	28/11/2007	FAN B869-75-032 WAS B869-75-001	3091

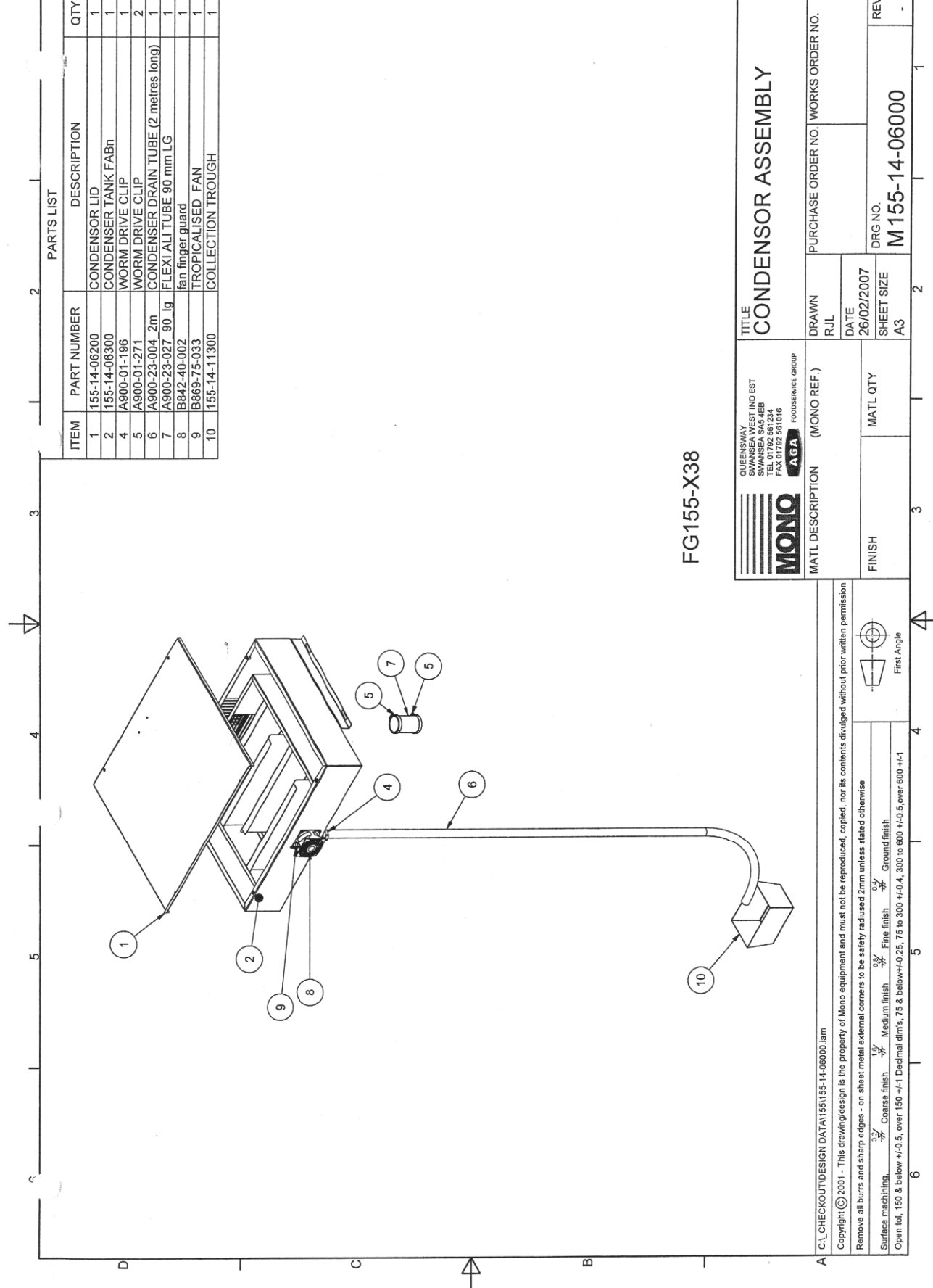
  

TITLE <b>CONDENSER/CANOPY-FG150 AC5</b>		DRAWN RJL	PURCHASE ORDER NO. WORKS ORDER NO.
SUBSIDIARY SWANSEA WEST IND EST SWANSEA SAS 4EB TEL 01792 561234 FAX 01792 561016		DATE 27/07/2007	DRG NO. <b>M150-19-03500</b>
<b>MONO</b> FOODSERVICE GROUP		MATL QTY A3	SHEET SIZE A3
MATL DESCRIPTION (MONO REF.)		FINISH	REV B

C:\CHECKOUT\DESIGN DATA\150-19-03500.lam  
 Copyright © 2001 - This drawing/design is the property of Mono equipment and must not be reproduced, copied, nor its contents divulged without prior written permission  
 Remove all burrs and sharp edges - on steel metal external corners to be safely radiused 2mm unless stated otherwise  
 Surface machining:  $\frac{3.2}{\sqrt{R}}$  Coarse finish  $\frac{1.6}{\sqrt{R}}$  Medium finish  $\frac{0.8}{\sqrt{R}}$  Fine finish  $\frac{0.4}{\sqrt{R}}$  Ground finish  
 Open tol, 150 & below  $\pm 0.5$ , over 150  $\pm 1.1$  Decimal dims, 75 & below  $\pm 0.25$ , 75 to 300  $\pm 0.4$ , 300 to 600  $\pm 0.5$ , over 600  $\pm 1$

# FG155-X38

PARTS LIST			
ITEM	PART NUMBER	DESCRIPTION	QTY
1	155-14-06200	CONDENSOR LID	1
2	155-14-06300	CONDENSER TANK FABn	1
4	A900-01-196	WORM DRIVE CLIP	1
5	A900-01-271	WORM DRIVE CLIP	2
6	A900-23-004 2m	CONDENSER DRAIN TUBE (2 metres long)	1
7	A900-23-027 90_lg	FLEXI ALI TUBE 90 mm LG	1
8	B842-40-002	fan finger guard	1
9	B869-75-033	TROPICALISED FAN	1
10	155-14-11300	COLLECTION TROUGH	1



FG155-X38

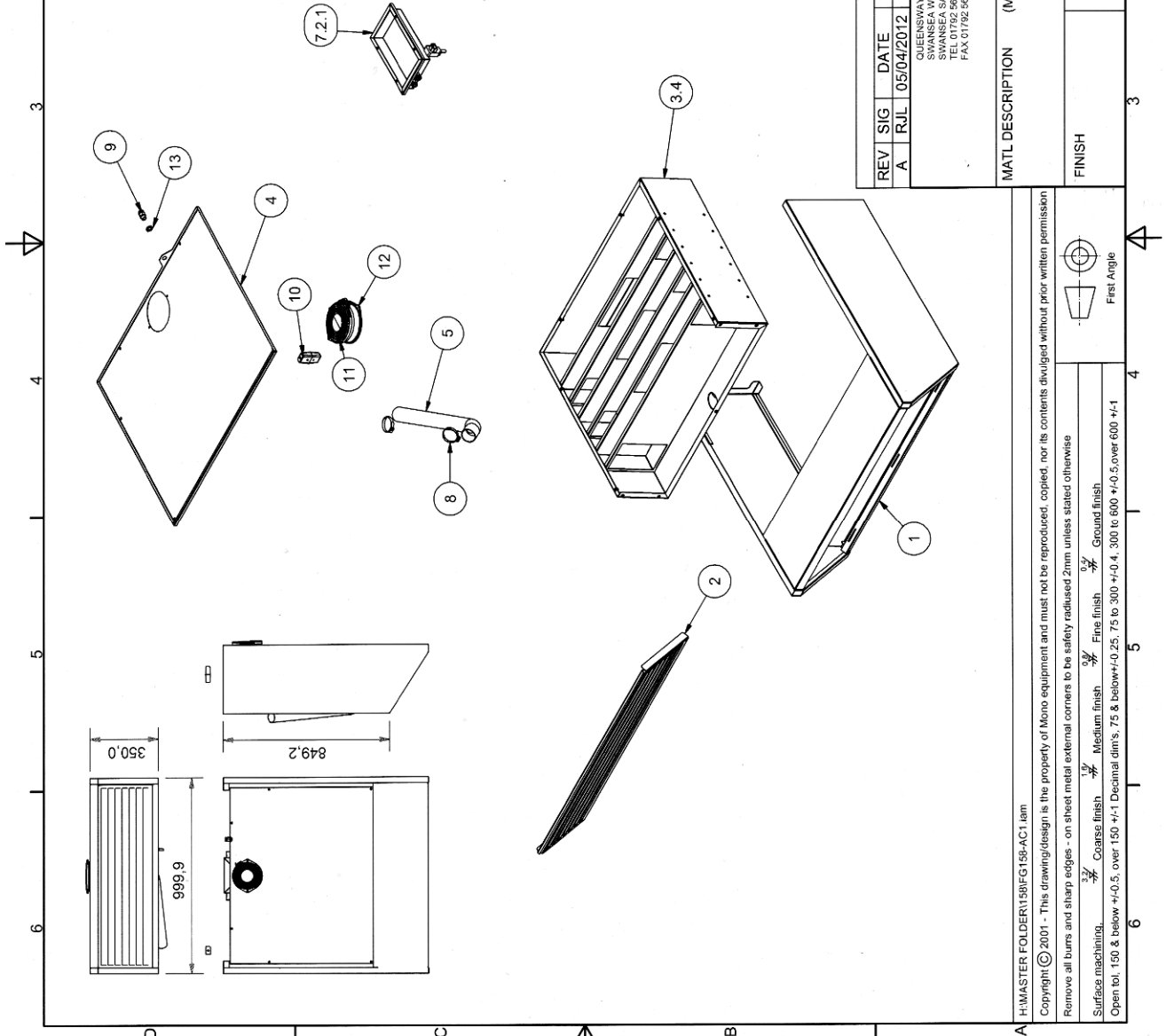
		QUEENSWAY SWANSEA WEST IND EST 155-14-06200 TEL 01752 851234 FAX 01752 851016 FOODSERVICE GROUP	
MATL DESCRIPTION (MONO REF.)		TITLE <b>CONDENSOR ASSEMBLY</b>	
FINISH		DRAWN RJL	PURCHASE ORDER NO.   WORKS ORDER NO.
MATL QTY		DATE 26/02/2007	DRG NO.
SHEET SIZE A3		<b>M155-14-06000</b>	

C:\CHECKOUT\DESIGN DATA\155155-14-06000.lam  
 Copyright © 2001 - This drawing/design is the property of Mono equipment and must not be reproduced, copied, nor its contents divulged without prior written permission  
 Remove all burrs and sharp edges - on sheet metal external corners to be safely radiused 2mm unless stated otherwise  
 Surface machining:  $\frac{3.2}{\sqrt{R}}$  Coarse finish  $\frac{1.6}{\sqrt{R}}$  Medium finish  $\frac{0.8}{\sqrt{R}}$  Fine finish  $\frac{0.4}{\sqrt{R}}$  Ground finish  
 Open tol. 150 & below  $\pm 0.5$ , over 150  $\pm 1$  Decimal dimts, 75 & below  $\pm 0.25$ , 75 to 300  $\pm 0.4$ , 300 to 600  $\pm 0.5$ , over 600  $\pm 1$



# FG158-AC1

ITEM	PART NUMBER	DESCRIPTION	QTY
1	158-14-03400	CANOPY WELDMENT	1
2	158-14-03600	CANOPY GILL	1
3	158-14-03800	CONDENSER MAIN TANK	1
3.1	158-14-04000	BAFFLE DOUBLE SQUARE CUTOUT	3
3.2	158-14-04100	BAFFLE SINGLE SQUARE CUTOUT	3
3.3	158-14-04200	CONDENSER DRAIN PIPE (22305497005) X12.5	1
3.4	158-14-04300	CONDENSER MAIN TANK SUPPORT BRACKET	1
3.5	158-14-04500	FLEXI DUCT CONNECTING TUBE	1
3.6	158-14-05000	POP RIVET 4.8x7 ALG	24
3.7	A900-01-249	M6 HEX-INSERT STAINLESS	11
3.8	A900-01-283	CONDENSER TOP COVER (A900-23-027)	1
4	158-14-04000	FLEXIBLE CONNECTING DUCT (A900-23-027)	1
5	158-14-04600	EVAPORATOR BOX	1
7	158-14-04000	EVAPORATOR BASE	1
7.1	158-14-04100	EVAPORATOR BASE M4 HEX-INSERT	4
7.1.1	158-14-04100	M4 HEX-INSERT	4
7.1.2	A900-01-205	WELD STUD M4X10 LG	2
7.1.3	E500-03-024	EVAPORATOR TRAY	1
7.2	158-14-04200	EVAPORATOR TRAY WELD STUD M4X10 LG	1
7.2.1	158-14-04200	EVAPORATOR TRAY WELD STUD M4X10 LG	1
7.2.2	E500-03-024	INSULATION BLANKET (A900-32-037)	1
7.3	158-14-04600	SCREW PAN HD SLOT M4X12LG STAIN ST	4
7.4	A900-03-715	240 V 20 W MICA HEATER PAD	1
7.5	B802-04-001	CABLE GLAND TYPE 250	2
7.6	B839-17-004	CERAMIC CONNECTOR BLOCK (2 WAY)	1
7.7	B842-50-009	LOCKNUT M16	2
7.8	B886-28-009	ANGLED MALE CONNECTOR	2
7.9	B970-25-002	WORM DRIVE CLIP	2
8	A300-01-271	CABLE GLAND TYPE 250	1
9	B839-17-004	CONNECTOR IN LINE LCP103	1
10	B849-64-002	Fan Finger Guard 510119-2-4039	1
11	B869-40-001	FAN-TROPICALIZED (UF-15KM23.BT.HF)	1
12	B869-75-032	LOCKNUT M16	1
13	B886-28-009	LOCKNUT M16	1

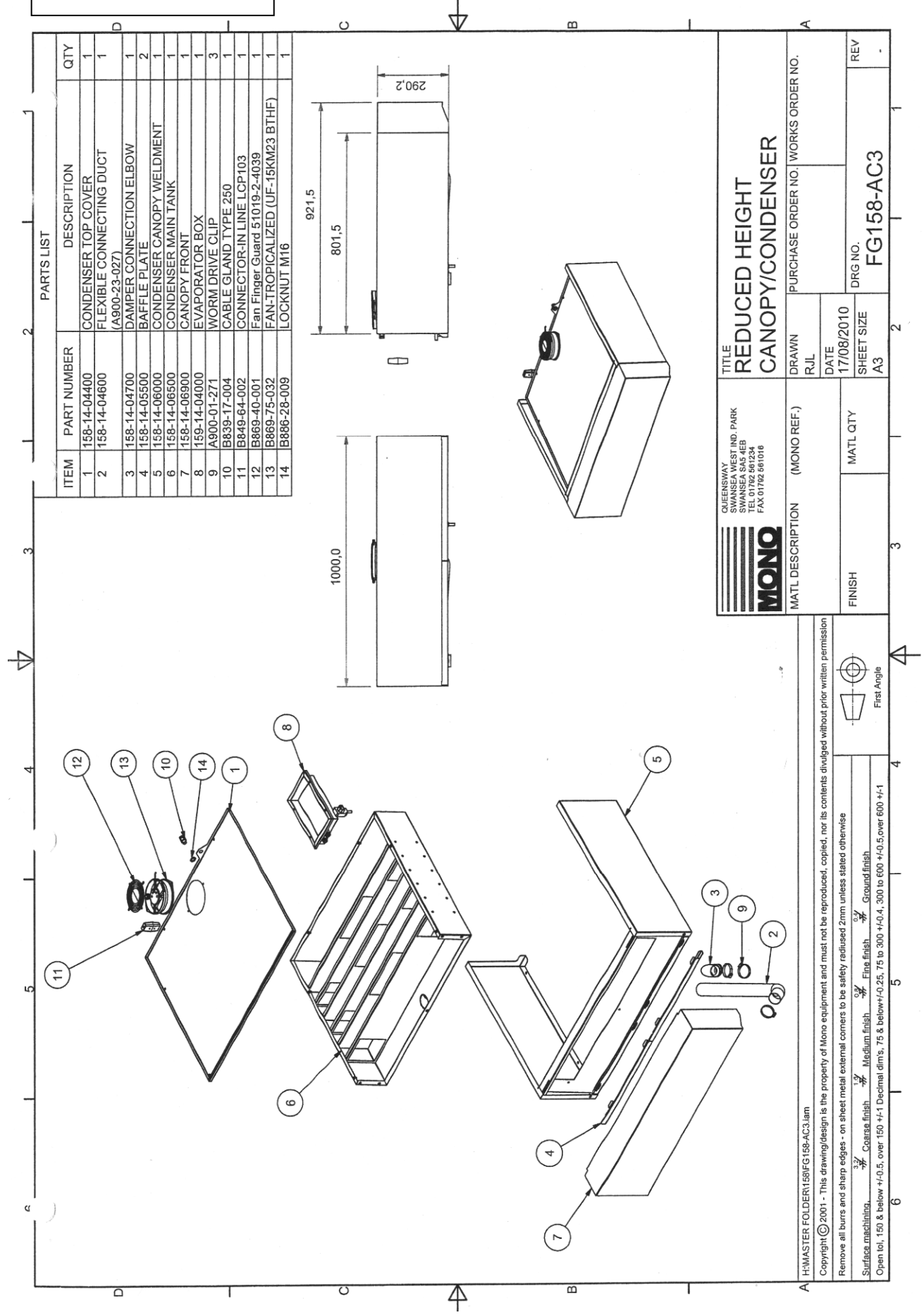


REV	SIG	DATE	DESCRIPTION	ECN
A	RJL	05/04/2012	PART 158-14-04700 REMOVED FROM ASSY	AN008-12

TITLE <b>CANOPY/CONDENSER</b>		DRAWN RJL	PURCHASE ORDER NO.   WORKS ORDER NO.
QUEENSWAY SWANSEA WEST IND EST SWANSEA SA6 4EE TEL 01792 961234 FAX 01792 961016		DATE 05/06/2008	DRG NO. <b>FG158-AC1</b>
FINISH	MATL QTY	SHEET SIZE A3	REV A

# FG158-AC3



PARTS LIST			
ITEM	PART NUMBER	DESCRIPTION	QTY
1	158-14-04400	CONDENSER TOP COVER	1
2	158-14-04600	FLEXIBLE CONNECTING DUCT (A900-23-027)	1
3	158-14-04700	DAMPER CONNECTION ELBOW	1
4	158-14-05500	BAFFLE PLATE	2
5	158-14-06000	CONDENSER CANOPY WELDMENT	1
6	158-14-06500	CONDENSER MAIN TANK	1
7	158-14-06900	CANOPY FRONT	1
8	159-14-04000	EVAPORATOR BOX	1
9	A900-01-271	WORM DRIVE CLIP	3
10	B839-17-004	CABLE GLAND TYPE 250	1
11	B849-64-002	CONNECTOR-IN LINE LCP103	1
12	B869-40-001	Fan Finger Guard 51019-2-4039	1
13	B869-75-032	FAN-TROPICALIZED (UF-15KM23 BTHF)	1
14	B886-28-009	LOCKNUT M16	1

<b>MONO</b> QUEENSWAY WEST IND. PARK SWANSEA SA5 4EB TEL 01782 561234 FAX 01782 561016		<b>TITLE</b> REDUCED HEIGHT CANOPY/CONDENSER	
<b>MATL DESCRIPTION</b> (MONO REF.)		<b>DRAWN</b> R/JL	<b>PURCHASE ORDER NO.</b> WORKS ORDER NO.
<b>FINISH</b>		<b>DATE</b> 17/08/2010	<b>DRG NO.</b> FG158-AC3
<b>MATL QTY</b>		<b>SHEET SIZE</b> A3	<b>REV</b> -

H-MASTER FOLDER158FG158-AC3.lam

Copyright © 2001 - This drawing/design is the property of Mono equipment and must not be reproduced, copied, nor its contents divulged without prior written permission

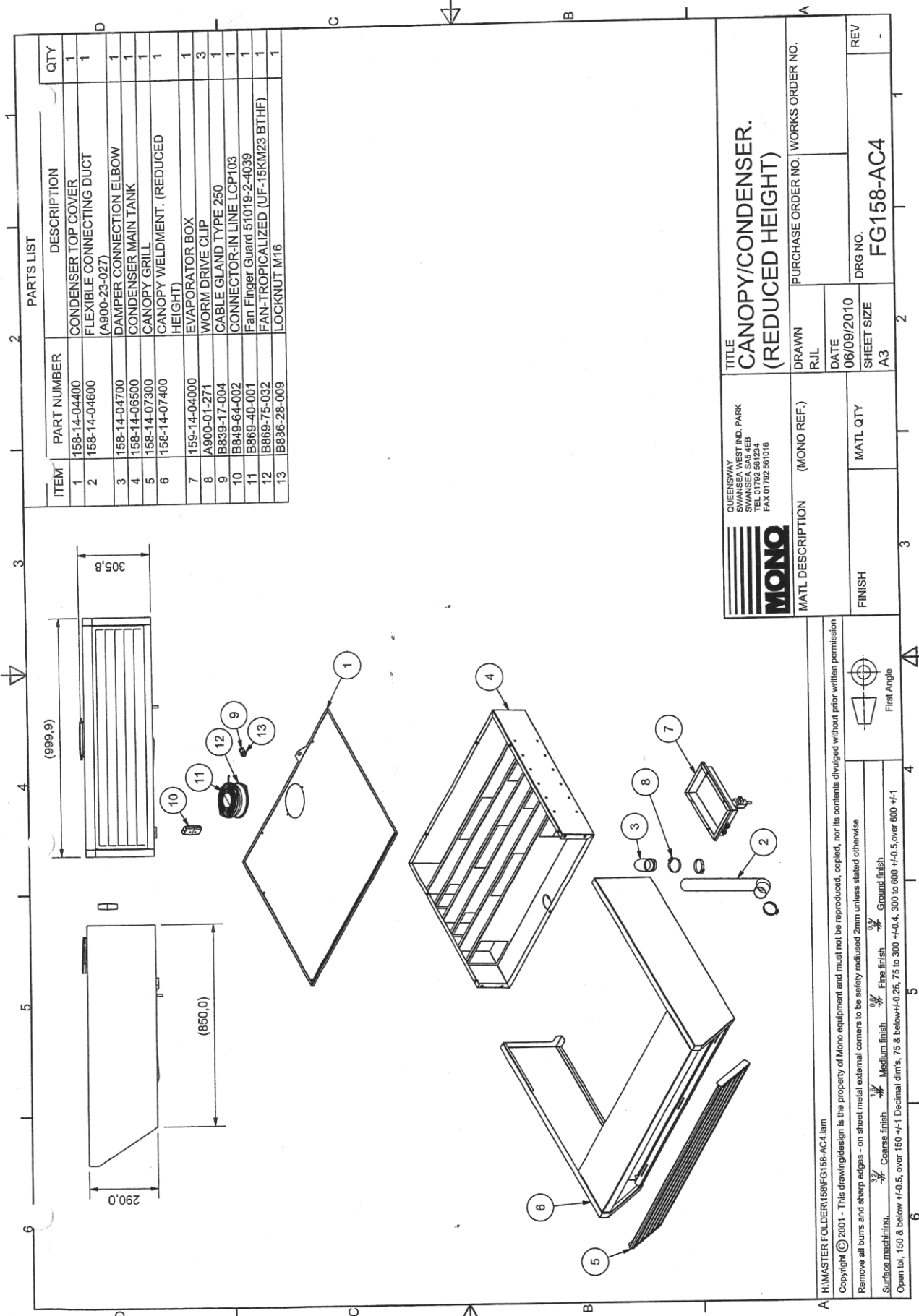
Remove all burrs and sharp edges - on sheet metal external corners to be safely radiused 2mm unless stated otherwise

Surface machining:  $\frac{3}{32}$  Coarse finish,  $\frac{1}{8}$  Medium finish,  $\frac{0.7}{32}$  Fine finish,  $\frac{0.4}{32}$  Ground finish

Open tol, 150 & below  $\pm 0.5$ , over 150  $\pm 1$  Decimal dims, 75 & below  $\pm 0.25$ , 75 to 300  $\pm 0.4$ , 300 to 600  $\pm 0.5$ , over 600  $\pm 1$

First Angle

# FG158-AC4

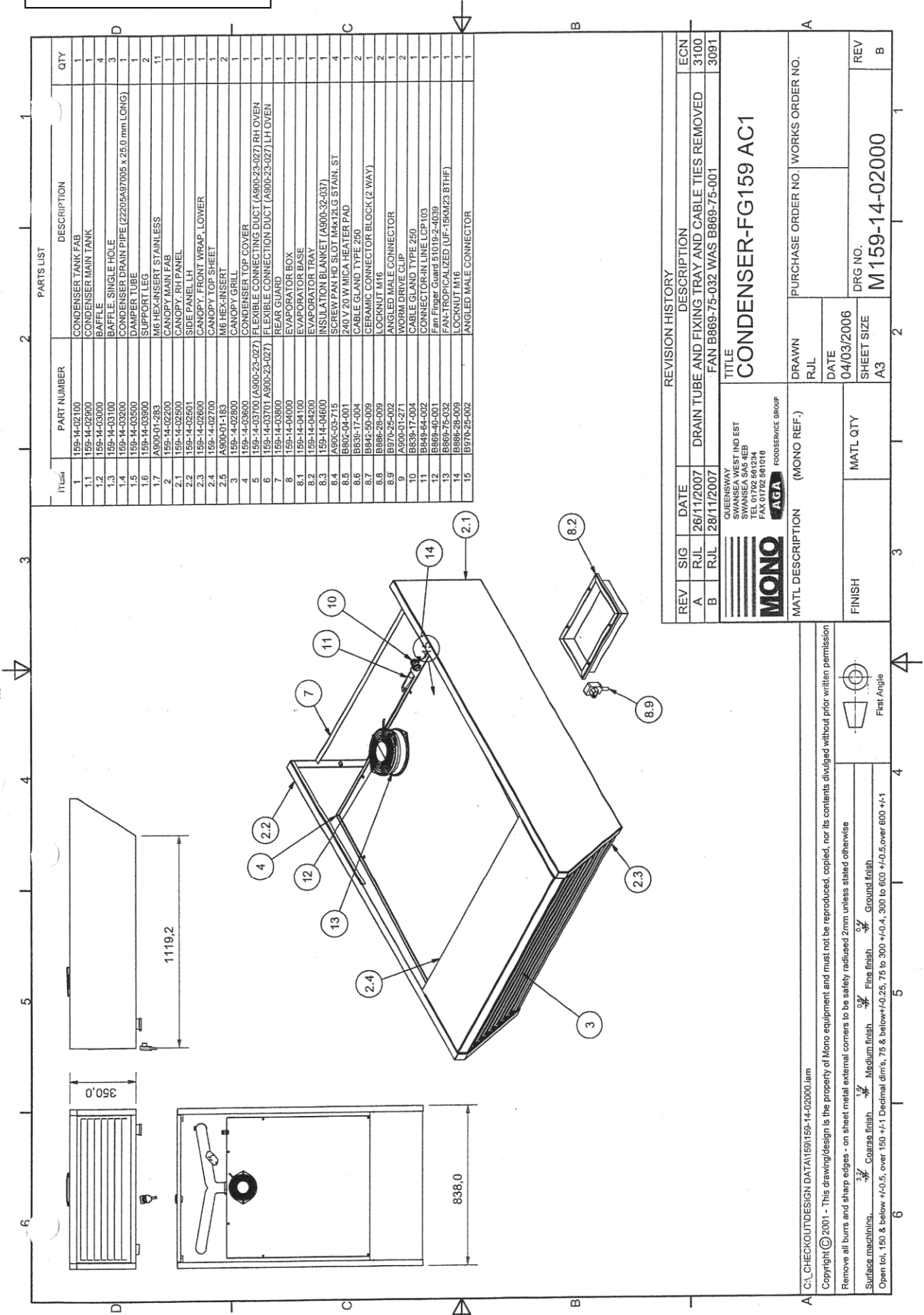


ITEM	PART NUMBER	DESCRIPTION	QTY
1	158-14-04400	CONDENSER TOP COVER	1
2	158-14-04600	FLEXIBLE CONNECTING DUCT (A900-23-027)	1
3	158-14-04700	DAMPER CONNECTION ELBOW	1
4	158-14-06500	CONDENSER MAIN TANK	1
5	158-14-07300	CANOPY GRILL	1
6	158-14-07400	CANOPY WELDMNT. (REDUCED HEIGHT)	1
7	159-14-04000	EVAPORATOR BOX	1
8	A900-01-271	WORM DRIVE CLIP	3
9	B839-17-004	CABLE GLAND TYPE 250	1
10	B849-64-002	CONNECTOR-IN LINE LCP103	1
11	B869-40-001	Fan Finger Guard 51019-2-4039	1
12	B869-75-032	FAN-TROPICALIZED (UF-15KM23 BTHF)	1
13	B896-28-009	LOCKNUT M16	1

<b>MONO</b> QUEENSWAY SWANSEA WEST IND. PARK SWANSEA, WA 6108 TEL 01792 861234 FAX 01792 861016		TITLE <b>CANOPY/CONDENSER.                  (REDUCED HEIGHT)</b>	
MATL DESCRIPTION (MONO REF.)		DRAWN	PURCHASE ORDER NO. WORKS ORDER NO.
FINISH		R/J/L	DATE
MATL QTY		DATE 06/09/2010	SHEET SIZE A3
REV		DRG NO. FG158-AC4	REV -

H/MASTER FOLDER\58\FG158-AC4.lam  
 Copyright © 2001 - This drawing/design is the property of Mono equipment and must not be reproduced, copied, nor its contents divulged without prior written permission  
 Remove all burrs and sharp edges - on sheet metal external corners to be safely radiused 2mm unless stated otherwise  
 Surface machining:  $\frac{1}{16}$  Coarse finish  $\frac{1}{32}$  Medium finish  $\frac{1}{64}$  Fine finish  $\frac{1}{128}$  Ground finish  
 Open tol, 150 & below  $\pm 0.5$ , over 150  $\pm 1$  Decimal dims. 75 & below  $\pm 0.25$ , 75 to 300  $\pm 0.4$ , 300 to 600  $\pm 0.5$ , over 600  $\pm 1$   
 First Angle

# FG159-AC1



ITEM#	PART NUMBER	DESCRIPTION	QTY
1	195-14-02700	CONDENSER TANK FAB	1
1.1	195-14-02900	CONDENSER MAIN TANK	1
1.2	195-14-03000	BAFFLE	4
1.3	195-14-03100	BAFFLE SINGLE HOLE	3
1.4	195-14-03200	CONDENSER DRAIN PIPE (2220x5497005 x 25.0 mm LONG)	1
1.5	195-14-03500	DAMPER TUBE	1
1.6	195-14-03900	SUPPORT LEG	2
1.7	A900-01-283	M6 HEX-INSERT STAINLESS	11
2	195-14-02200	CANOPY MAIN FAB	1
2.1	195-14-02500	CANOPY RH PANEL	1
2.2	195-14-02501	SIDE PANEL LH	1
2.3	195-14-02600	CANOPY FRONT WRAP, LOWER	1
2.4	195-14-02700	CANOPY TOP SHEET	1
2.5	A900-01-163	M6 HEX-INSERT	2
3	195-14-02800	CANOPY GRILL	1
4	A900-01-436	CONDENSER TOP COVER	1
5	195-14-03700 (A900-23-027)	FLEXIBLE CONNECTING DUCT (A900-23-027) RH OVEN	1
6	195-14-03701 (A900-23-027)	FLEXIBLE CONNECTING DUCT (A900-23-027) LH OVEN	1
7	195-14-03800	REAR GUARD BOX	1
8	195-14-04000	EVAPORATOR BOX	1
8.1	195-14-04100	EVAPORATOR TRAY	1
8.2	195-14-04200	EVAPORATOR TRAY	1
8.3	195-14-04600	INSULATION BLANKET (A900-32-037)	1
8.4	A900-03-715	SCREW PAN HD SLOT M4x12 LG STAIN. ST	4
8.5	B802-04-001	200 V 20 W NICA HEATER PAD	2
8.6	B838-17-004	CABLE GLAND TYPE 250	2
8.7	B842-50-009	CERAMIC CONNECTOR BLOCK (2 WAY)	2
8.8	B886-28-009	LOCKNUT M16	2
8.9	B970-25-002	ANGLED MALE CONNECTOR	2
9	A900-01-271	WORM DRIVE CLIP	2
10	B838-17-004	CABLE GLAND TYPE 250	1
11	B848-64-002	CONNECTOR-IN LINE LCP103	1
12	B869-40-001	Fan Filter Guard 51019-2-1039	1
13	B869-75-032	FAN-TROPICALIZED (UF-16KM23 BTHF)	1
14	B886-28-009	LOCKNUT M16	1
15	B970-25-002	ANGLED MALE CONNECTOR	1

REV	SIG	DATE	DESCRIPTION	ECN
A	RJL	26/11/2007	DRAIN TUBE AND FIXING TRAY AND CABLE TIES REMOVED	3100
B	RJL	28/11/2007	FAN B869-75-032 WAS B869-75-001	3091

TITLE <b>CONDENSER-FG159 AC1</b>	
QUEENSWAY SWANSEA WEST IND EST SWANSEA SA6 4EB TEL 01792 581010 FAX 01792 581016 FOODSERVICE GROUP	PURCHASE ORDER NO.   WORKS ORDER NO.
MATL DESCRIPTION (MONO REF.)	DRAWN RJL
FINISH	DATE 04/03/2006
MATL QTY	SHEET SIZE A3
DRG NO. <b>M159-14-02000</b>	REV B

C:\CHECKOUT\DESIGN DATA\159159-14-02000.lam

Copyright © 2001 - This drawing/design is the property of Mono equipment and must not be reproduced, copied, nor its contents divulged without prior written permission

Remove all burrs and sharp edges - on sheet metal external corners to be safely radiused 2mm unless stated otherwise

Surface machinings:  $\frac{3}{32}$  Coarse finish,  $\frac{1}{16}$  Medium finish,  $\frac{1}{32}$  Fine finish,  $\frac{1}{64}$  Ground finish

Open tol, 150 & below +/0.5, over 150 +/-1 Decimal dims, 75 & below +/0.25, 75 to 300 +/0.4, 300 to 600 +/0.5, over 600 +/-1

First Angle

If a fault arises, please do not hesitate to contact the Customer Service Department, quoting the **machine serial number** on the silver information plate of the machine.



**MONO**

Queensway  
Swansea West Industrial Estate  
Swansea. SA5 4EB UK

**email: [spares@monoequip.com](mailto:spares@monoequip.com)**

**Web site: [www.monoequip.com](http://www.monoequip.com)**

**Tel. +44(0)1792 561234**

**Spares +44(0)1792 564039**

**Fax. 01792 561016**